

The right fit for your ESD-safe handling project

# Durastat

## TOTE SYSTEM



- + Any size
- + Low tooling cost
- + 40+ Standard sizes



[corstat.com](http://corstat.com)

# Durastat TOTE SYSTEM

SHOP EXPRESS ONLINE:

Scan to shop Durastat system online  
or go to: [corstat.com/product/durastat](http://corstat.com/product/durastat)



## FEATURES

- 4MM Conductive Fluted Plastic (CFP)
- Lightweight and stackable
- Excellent returnable tote
- Over 40 sizes to fit your exact needs
- Fit with any of 533 Corstat cell sizes
- Optional use of CFP partitions

## ADDITIONAL OPTIONS

HAND  
HOLE  
LINER



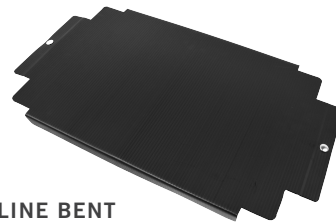
CLOSED  
HAND HOLE  
LINER



DROP-IN  
COVER



LINE BENT  
COVER



OPTION: Add snaps

PART #	DIMENSIONS (I.D.)
DT4202	21-1/2 x 18-1/2 x 2-1/4"
DT4002	16-5/8 x 9-3/4 x 2-3/4"
DT4004	16-5/8 x 9-3/4 x 3-3/4"
DT4011	10-3/8 x 10-3/8 x 4"
DT4204	21-1/2 x 18-1/2 x 2-1/4"
DT4120	19-1/2 x 12-3/8 x 5-1/2"
DT4006	16-5/8 x 9-3/4 x 5-5/8"
DT4230	18-5/8 x 15 x 5-7/8"
DT4009	18-1/2 x 13-3/4 x 6-1/8"
DT4001	22-3/4 x 12-1/2 x 6-1/4"
DT4206	21-1/2 x 18-1/2 x 6-1/4"
DT4040	18-1/2 x 10 x 6-3/4"
DT4007	16-5/8 x 9-3/4 x 7-1/2"
DT4130	18-5/8 x 15 x 8"
DT4140	22-7/8 x 12-7/8 x 8"
DT4208	21-1/2 x 18-1/2 x 8-1/4"
DT4008	16-5/8 x 9-3/4 x 9-1/4"
DT4330	18-5/8 x 15 x 10"
DT4210	21-1/2 x 18-1/2 x 10-1/4"
DT4030	23-3/4 x 12-1/4 x 10-3/4"
DT4005	16-5/8 x 9-3/4 x 11-1/4"
DT4110	17-3/4 x 14-3/4 x 11-1/4"
DT4430	18-5/8 x 15 x 12"
DT4212	21-1/2 x 18-1/2 x 12-1/4"
DT4830	18-3/8 x 12-3/8 x 13"
DT4000	22-3/4 x 12-1/2 x 13"
DT4000-4	22-3/4 x 12-1/2 x 14"
DT4530	18-5/8 x 15 x 14-1/4"
DT4015	22-3/4 x 12-1/2 x 15-1/2"
DT4018	18-3/8 x 12-3/8 x 18-3/4"

## Why choose Durastat?

### DURASTAT

- The right size
- Custom interiors
- Great cushioning
- Lightweight
- Reduce shipping costs
- Save Space

VS.

### MOLDED TOTES

- Wrong size
- Poor cushioning
- Poor ESD protection
- Inefficient use of space
- Heavy

# Customize Your Durastat Tote

INTERIORS



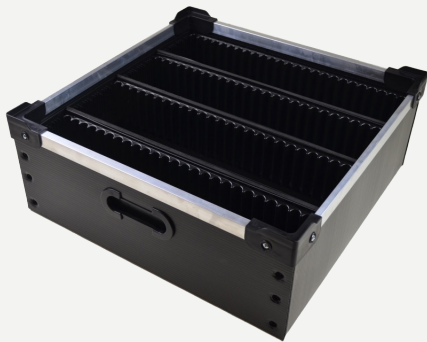
## CORSTAT

Durastat totes with economical Corstat bent over partitions to fit your exact board sizes and safely cushion.



## CONDUCTIVE FLUTED PLASTIC

Fit your Durastat tote with bent over or single-wall conductive fluted plastic (CFP) partition sets.



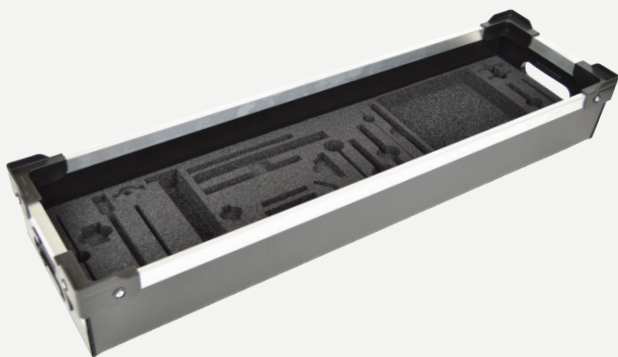
## CARD GUIDE

Fixed or adjustable thermoformed PCB card guides hold delicate boards by the edges. Conductive or static dissipative card guide slotting is made to match your PCB.



## KSF FOLDERS

Install KleanStat Flex folders in your tote in seconds for clean handling without bagging labor. It's a great long-lasting solution to fight FOD & ESD.



## FOAM

Build a Durastat tote with permanent soft or firm die-cut foam inserts to physically protect in shipping or handling.



## THERMOFORMED INSERTS

Build Durastat totes around the perfect thermoformed handling tray for your devices. The best in ESD, physical and FOD protection.

# Durastat TRAYS

Use the Durastat lightweight design to make the perfect handling system to suit any product size and shape. Maximize shelving and carts or workstation space.



**KLEANSTAT FLEX INSERT**



**FOAM SHADOW INSERT**



**PARTITION INSERT**



**THERMOFORMED INSERT**

## STANDARD DURASTAT TRAYS

1-3 WEEK LEAD TIME | NO TOOLING COST

- Constructed with durable Corstat or CFP materials
- Double walled and molded corners ensure secure stacking
- Highly reusable and recyclable
- Includes 1/8" crosslink static dissipative foam pad laminated to a Corstat or CFP stiffener pad

### Durastat Trays

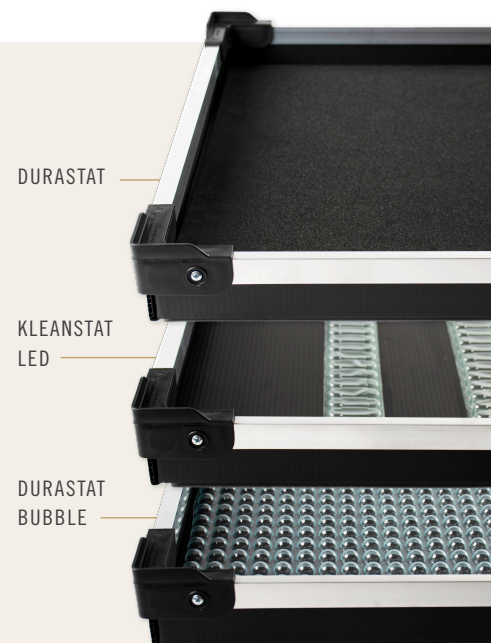
PART #	DIMENSIONS (I.D.)	DESCRIPTION
DT6200A	10-1/2 x 8-5/16 x 1-3/4"	Durastat 4mm CFP tray with corner stackers and 1/8" thick crosslink foam attached to Corstat stiffener pad for extra durability.
DT6201A	18 x 11-3/8 x 1-3/4"	
DT6202A	24 x 18 x 2-1/8"	

### KleanStat LED Tray

PART #	DIMENSIONS (I.D.)	DESCRIPTION
DT6202LED-TPU	12 x 18 x 2-1/8"	Durastat tray with formed slotting for 25 LED boards

### Durastat Bubble Tray

PART #	DIMENSIONS (I.D.)	DESCRIPTION
DT6202KSB-TPU	12 x 18 x 2-1/8"	Durastat tray with KleanStat small bubbles .25 high



### SHOP STANDARD TRAYS ONLINE:

Scan to shop Durastat trays online or go to [corstat.com/standard-material-handling](http://corstat.com/standard-material-handling)



conductive containers inc.

MADE IN THE USA

corstat.com | 763.537.2090