



SDPU

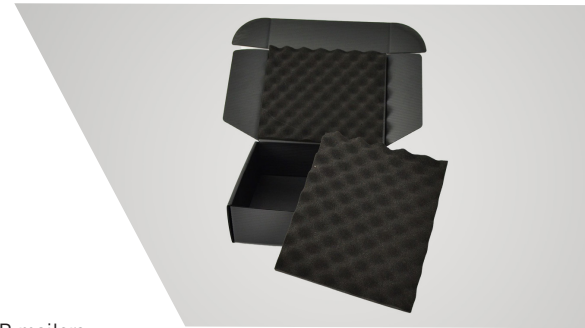
PN: SDPU

DESCRIPTION: Permanent Foam Dissipative Soft
APPLICATION: Long-Term Use



MATERIAL INFO

SDPU is black permanent static dissipative cushioning foam made from urethane. CCI's SDPU is carbon loaded and cured to retain softness and low sloughing performance. This material is very good for reusable shipping and handling applications.



CHARACTERISTICS

- 10^4 - 10^{10} resistance
- Black
- Soft urethane
- Not humidity dependent

APPLICATIONS

- Convuluted foam in Corstat/CFP mailers
- Reusable tote cushioning pads
- Lightweight ESD safe shock protection
- Small component shipping

SPECIFICATIONS

PROPERTY	VALUE (U.S.)	TEST METHOD
Color	Black	Visual
Volume Resistance*	10^4 - 10^{10} Ohms/sq	ANSI/ESD STM11.12-2021
Surface Resistance	10^4 - 10^{10} Ohms/sq	ANSI/ESD STM11.11-2022
Static Decay Rate	0.01 Sec	ASTM D-257
Indent Force Deflection @ 25%	45-55 psi	ASTM D-3574-01
Shelf Life	Long Term	

*Volume resistance may vary on parts over .50 thick

All values are for pre-formed materials. Electrical values will vary with each individual design.

All information, recommendations and suggestions appearing in this bulletin concerning the use of our products are based upon tests and data believed to be reliable; however, it is the user's responsibility to determine the suitability for their own use of the products described herein. Since the actual use by others is beyond our control, no guarantee, expressed or implied, is made by Conductive Containers, Inc. as to the effects of such use or the results to be obtained, nor does Conductive Containers, Inc. assume any liability arising out of use, by others, of the products referred to herein. Nor is the information herein to be construed as absolutely complete since additional information may be necessary or desirable, when particular or exceptional conditions or circumstances exist or because of applicable laws or government regulations. Nothing herein contained is to be construed as permission or as a recommendation to infringe any patent.