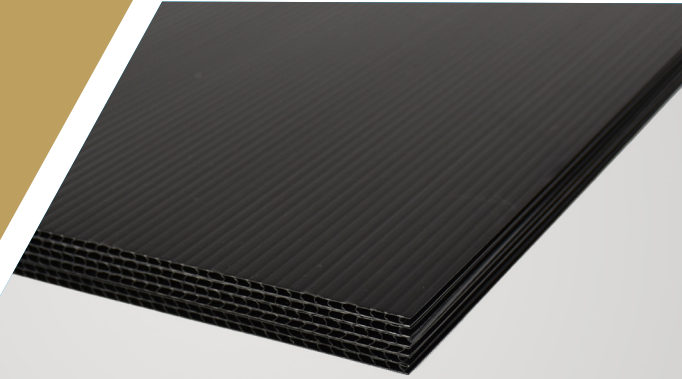




# CONDUCTIVE FLUTED PLASTIC BOARD

PN: CFP

**DESCRIPTION:** Extruded carbon-loaded polypropylene**APPLICATION:** Long-Term Use

## MATERIAL INFO

Conductive fluted plastic (CFP) is extruded carbon loaded polypropylene that can be fabricated in to boxes, totes, bins and shelf liners for long term use. The material is water resistant and suitable to be cleaned for some clean room applications. This material has excellent durability and is used in CCI's Durastat tote line to shield contents from static.

## CHARACTERISTICS

- Conductive <math>10^5</math>
- Can be die cut and scored
- Made in 2MM, 3MM and 4MM profiles
- Cleanable
- Humidity independent

## APPLICATIONS

- Long term static protection
- Returnable shipping
- Durastat totes
- Shelf liners
- Mailers and bins



## SPECIFICATIONS

PROPERTY	VALUE (U.S.)	TEST METHOD
Color	Black	
Static Decay		
15% Relative Humidity	.03 sec	
50% Relative Humidity	.03 sec	
Resistance		
Volume Resistance	$10^2 \times 10^5$	ANSI/ESD STM11.12-2021
Surface Resistance	$10^2 \times 10^5$	ANSI/ESD STM11.11-2022
Resin	Polypropelene	
Board Weight	104-170-lbs per thousand sq ft.	
Thickness	2.00 MM, 3.00MM, 4.00MM	

All values are for pre-formed materials. Electrical values will vary with each individual design.

All information, recommendations and suggestions appearing in this bulletin concerning the use of our products are based upon tests and data believed to be reliable; however, it is the user's responsibility to determine the suitability for their own use of the products described herein. Since the actual use by others is beyond our control, no guarantee, expressed or implied, is made by Conductive Containers, Inc. as to the effects of such use or the results to be obtained, nor does Conductive Containers, Inc. assume any liability arising out of use, by others, of the products referred to herein. Nor is the information herein to be construed as absolutely complete since additional information may be necessary or desirable, when particular or exceptional conditions or circumstances exist or because of applicable laws or government regulations. Nothing herein contained is to be construed as permission or as a recommendation to infringe any patent.