

CUSTOM ESD & COMMERCIAL SOLUTIONS FOR YOUR PRODUCT



THERMOFORMING

SOLUTIONS

THE CCI ADVANTAGE



THE WHOLE PACKAGE

CCI combines thermoforming, injection molding, foam fabrication and box manufacturing all on one campus.



DESIGN

Our experienced staff has been designing packaging for high-tech electronics for many years. We design to fit your system and specific requirements in the most cost effective way possible.



TOOLING

Our in-house tooling facility shortens lead times and reduces tooling cost.



PROTOTYPING

From sampling the correct outer box to 3D printing a plastics mold to test your concept, we do it all.



INVENTORY

There are no minimums with CCI; we will maintain inventory to run any quantity once we understand your needs.

**AS EXPERTS IN THE ESD INDUSTRY,
WE ARE USED TO UNUSUAL CHALLENGES.
WE LOVE TO SOLVE PROBLEMS.**

OUR PROCESS

QUOTE
1-3 days

DESIGN
7-10 days

PROTOTYPE
3-5 days

TOOLING
15-20 days

**1ST
ARTICLES**
2 days

TOTAL: ~40 days*

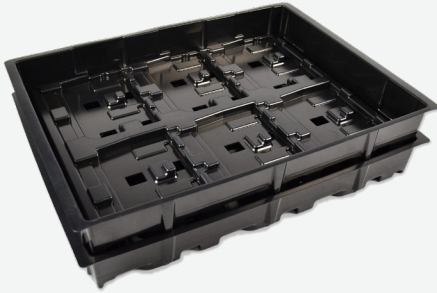
*Standard timeline. All days are business days. Subject to client approvals. Can adjust timeline according to project needs.



WE LISTEN ■ WE DESIGN ■ WE MANUFACTURE ■ WE SERVICE

ESD SOLUTIONS IDEA BOX

Our experienced staff has been designing packaging for high-tech electronics for many years. We design to fit your system and specific requirements in the most cost-effective way.



MATERIALS: Conductive Styrene
APPLICATION: Static-safe transport of large ESD-sensitive PCBs



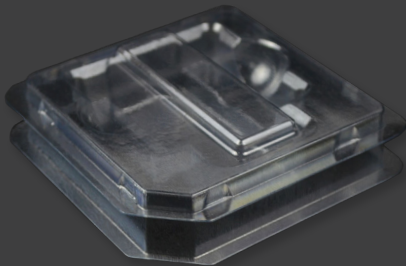
MATERIALS: Dissipative insert in CCI conductive injection molded box
APPLICATION: ESD safe handling for PCB assemblies



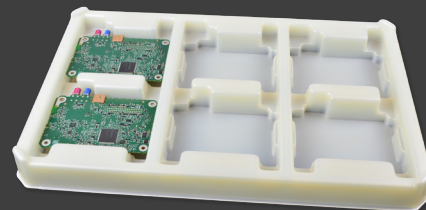
MATERIALS: Kleanstat flex/S680
APPLICATION: ESD-sensitive component handling



MATERIALS: Conductive Styrene
APPLICATION: Military/ammunition tray

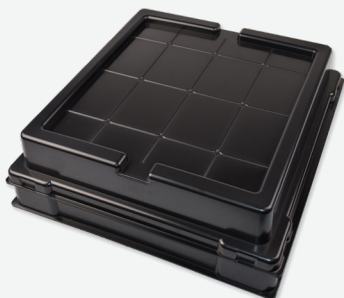


MATERIALS: Clear dissipative water-washable PETG
APPLICATION: ESD-safe shipping



MATERIALS: Thick gauge S840 IDP
APPLICATION: ESD-safe handling for PCB assemblies

ESD SOLUTIONS IDEA BOX



MATERIALS: Conductive Styrene

APPLICATION: Stackable tray for robotic handling of electronics



MATERIALS: IDP permanent dissipative tray

APPLICATION: Tote insert for long-term storage & handling



MATERIALS: Clear dissipative PVC

APPLICATION: Shipping for electronic sensors

COMMERCIAL SOLUTIONS IDEA BOX



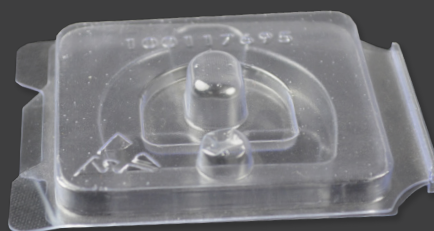
MATERIALS: RPET

APPLICATION: Shipping trays for automotive parts



MATERIALS: PVC

APPLICATION: Protective cover for automotive



MATERIALS: PETG

APPLICATION: Medical device packaging



TECHNICAL SPECIFICATIONS

MATERIAL TYPES

	ESD	COMMERCIAL	MEDICAL	HIGH TEMP
PET	X	X	X	
PETG	X	X	X	
PVC	X	X	X	
HIPS	X	X	X	
ABS	X	X	X	
PC	X	X	X	X

PART SIZE

MINIMUM: 1/2" x 1/2"

MAXIMUM: 30" x 40"

MAXIMUM DEPTH: 6.5"

MATERIAL THICKNESS: .008" - .150"

TELL US WHAT YOUR MATERIAL NEEDS ARE.

CCI will design a material inventory plan to meet your needs.

We prefer to tell you what can be done – not what you cannot do.

