

— 2016 —

ESD SOLUTIONS CATALOG

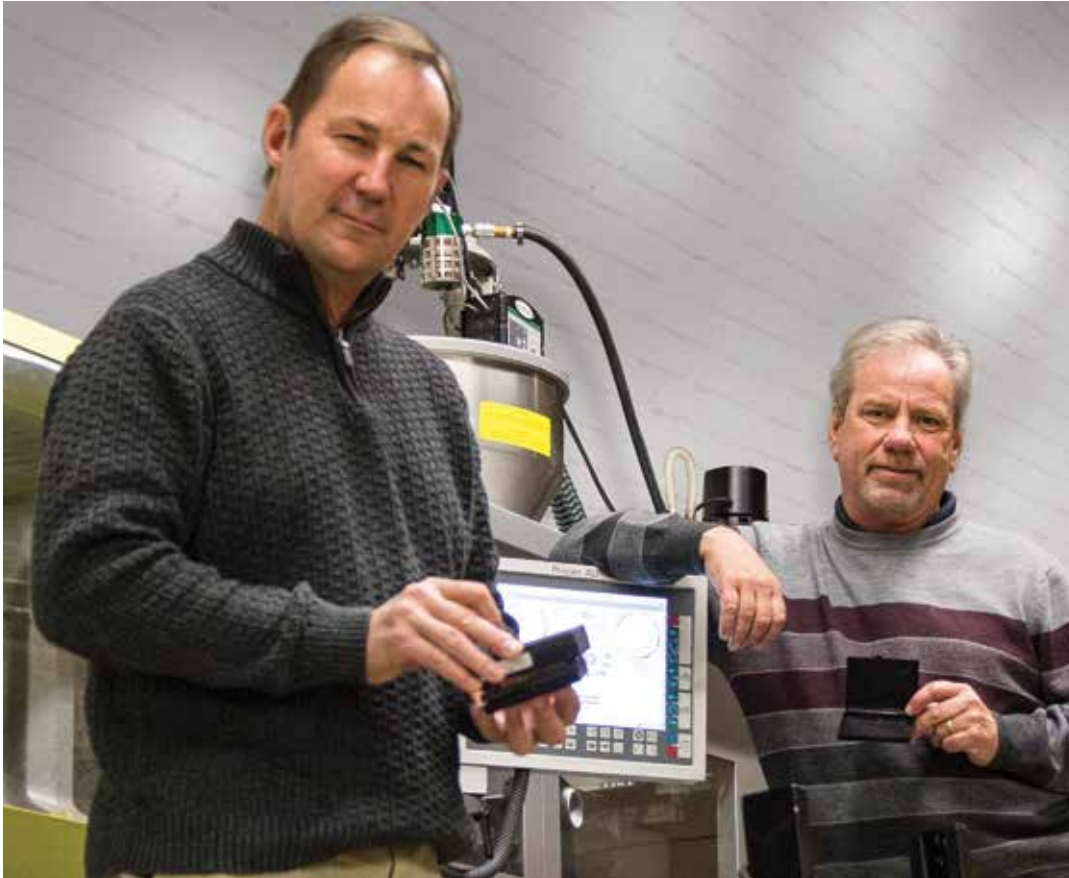


**MORE SOLUTIONS
NO STATIC**



conductive containers, inc.

4500 Quebec Avenue North • New Hope, MN 55428



THE POWER OF
ESD²
ELECTROSTATIC DISCHARGE PACKAGING
+ ENGINEERED SOLUTIONS AND DESIGNS

WELCOME TO OUR ESD STOCK SOLUTIONS CATALOG

Throughout the pages of this catalog you will find thousands of ESD solutions for a wide variety of industries...from high tech electronics and health care to aerospace and computing. Solutions that protect sensitive components through every step of the manufacturing process from prototyping to handling to shipping.

In our almost 40 years of experience, we've become known as the ESD experts...the guys that can provide the complete solution with just one call. That's because we've literally seen it all, done it all and have a book full of solutions to prove it. That's not bragging. It's just the simple truth.

It all started over 38 years ago when we invented CORSTAT and since has evolved into a wide variety of ESD protective designs, materials, and processes such as thermoformed plastics, permanent ESD safe foams, injection molded boxes, CFP products, our new Tacki Pak Technology, and much more.

But even with thousands of stock solutions in our warehouse and ready to ship...it's just the tip of the iceberg. More than 80% of our business is in the custom solutions we design, engineer and produce to protect sensitive electronics. Every day, we are seeing new challenges and creating new solutions. That's the passion that truly fuels CCI.

**IF YOU DON'T FIND THE SOLUTION YOU NEED,
TELL US. AND WE'LL GET TO WORK.**

TABLE OF CONTENTS

ELECTROSTATIC DISCHARGE PACKAGING

KleanStat Products	6-7
PCB Board Shipping	8-9
Component Shipping	10-14
Component Handling	15-17
Tape and Reel	18-19
ESD Storage	20-21
Workstations	22-23
PCB Board Handling	24-30
Board Handling	31

ENGINEERED SOLUTIONS AND DESIGNS - CUSTOM PRODUCTS

Custom Products	32-38
Material Selection Guide	39

WHAT'S NEW

KLEANSTAT

A division of CCI products that combines dissipative ESD protection with cleanroom compatible material. Find more info on pages 6-7 and page 24.

CUSTOM PACKAGING IDEAS

80% of our packaging is custom designed with no minimums. See what our engineers have designed for a multitude of products! Pages 33-37.

CORSTAT XD

Static shielding corrugated with high durability UV cured static dissipative surface. Great for low FOD, high-reuse applications. More info on page 33.

MATERIAL SELECTION GUIDE

Find out how many raw material options CCI offers and what we recommend each material for. Find out more information on page 38.

ORDER POLICIES

Shipping Locations: CCI has stock products warehoused in New Hope, Minnesota. All freight charges are billed F.O.B. origin.

Product Service Codes:

S - Standard products normally stocked at CCI-lead time is 1-5 days for listed quantities.

M - Made to order with no tooling - lead time is 5-10 working days.

C - Custom products with a longer lead time that are made to order with no tooling. Consult customer service for lead time.

Contact your CCI CSR to find out which product service code applies.

Pricing: CCI maintains a stock products price list that is subject to change without notice.

Minimum Order: \$75.00

Stock Outs: CCI stock products are normally in stock however, CCI is not responsible for delays due to temporary stock-outs. CCI will make every attempt to produce and deliver as quickly as possible in these instances. CCI is not responsible for charges incurred for expedited freight.

Stock Returns: CCI will accept returns of stock products within 30 days of the order and to a maximum dollar volume of \$5,000. Returns must be approved by CCI customer service and assigned an RMA# to be accepted at CCI. A 15% restocking charge applies to all items returned and the customer pays the return freight charges. If returns are made as the result of an error by CCI, CCI will pay the return freight and replace the parts as required.



WHEN **HANDLE** ISN'T GOOD

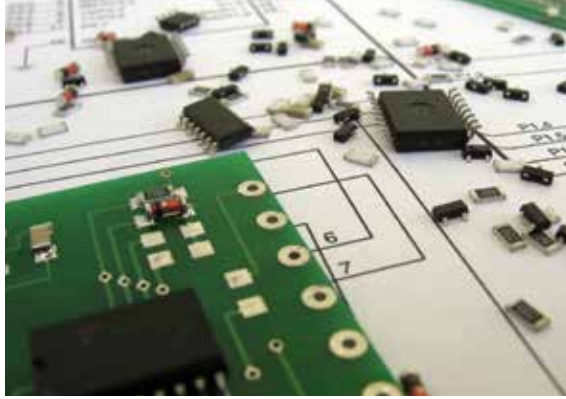
Even though we have thousands of stock products ready to ship, the vast majority of our work is in the custom solutions we develop to meet the ever-changing needs of electronics manufacturers around the world.

With today's rapidly changing technology and the explosion of high

value components, the demand for custom ESD handling solutions continues to grow. No one knows how to handle ESD better than CCI. Over 38 years ago we started the industry with CORSTAT and have continued to lead it with static-safe solutions that include:

SINCE 1978 WE'VE BUILT A REPUTATION AS THE LEADER IN





WITH CARE ENOUGH

- ESD safe & cleanroom compatible thermoformed designs
- Injection molding
- Permanent ESD safe foams - custom made
- DuraStat totes designed for your system
- Conductive Fluted Plastic
- Tacki Pak component retention technology
- Corstat conductive corrugated

At CCI our passion for ESD design is combined with vertically integrated manufacturing and a large inventory of ESD safe raw materials. This allows us to stand out as the leader in both stock and custom answers for ESD problems.

STATIC SAFE PACKAGING AND MATERIAL HANDLING SOLUTIONS.



INTRODUCING KLEANSTAT FLEX



NEW!

You told us what you needed to protect your high-value electronics...now we have the material that can do it!

- Permanent static dissipative plastic
- Highly flexible with good cushioning properties
- Almost impossible to puncture
- Cleanroom compatible and safe to clean with IPA
- Thermoformable for a custom fit
- Non-skid surface
- Chemically safe
- Non-abrasive

KLEANSTAT FLEX - when handle with care isn't enough.

SOFT SUPER TOUGH

APPLICATIONS INCLUDE CART COVERS, CAFETERIA TRAY INSERTS, BUBBLE MAILERS, SHELF LINERS, FLOOR TRAVELERS, VACUUM FORMED TRAYS, AND MORE!

NEW!

KLEANSTAT WAFFLE PAKS

Cleanroom compatible wafer and die carrier pack

- Inherently dissipative • Low minimums • Dissipative range 10⁶ - 10¹¹
- Cleanroom compatible and IPA washable 10¹¹ • Non-chalking
- Injection molded durable design

PART NUMBER	DESCRIPTION	SIZE L X W X H (OD)	CAVITY SIZE L X W X H (ID)
KWP4-1	Permanently dissipative device carrier with 4 cells.	4.01 X 4.01 X .315"	1.558 X 1.558 X .115"
KWP4-2	Permanently dissipative device carrier with 9 cells.	4.01 X 4.01 X .315"	1.04 X 1.04 X .150"
KWP4-3	Permanently dissipative device carrier with 16 cells.	4.01 X 4.01 X .315"	.76 X .76 X .105"
KWP4-C	Dissipative cover to fit trays	4.02 X 4.02 X .29"	Not Available



For more information visit www.corstat.com/KleanStatWafflePak

NEW!

KLEANSTAT INJECTION MOLDED CASES

Cleanroom compatible pack

- Inherently dissipative • Low minimums • Cleanable and reuseable
- Low FOD, Permanently ESD safe • Injection molded durable design

PART NUMBER	DIMENSIONS	MINIMUM ORDER QUANTITY
KS2020	2.0 X 2.0 X .25"	500
KS2525	2.56 X 2.56 X .50"	150
KS2820	2.875 x 2.0 x .50"	500
KS2535	3.5 X 2.56 X .50"	100
KS2535-75	3.5 X 2.56 X .75"	500
KS2535-100	3.5 X 2.56 X 1"	500
KS3545	4.56 X 3.5 X .50"	500



For more information visit www.corstat.com/KleanStatCases

KLEANSTAT THERMOFORMING MATERIALS

Cleanroom compatible plastic for all thermoforming applications

SEE MORE ON PAGE 35



NEW!

KLEANSTAT S680

- Cleanroom compatible and IPA washable
- Inherently permanently dissipative
- Not humidity dependent
- Available in .015, .020, .040, and .060 thicknesses
- Light blue in color
- Material stocked in rolls



NEW!

KLEANSTAT S840

- Cleanroom compatible and IPA washable
- Inherently permanently dissipative
- Not humidity dependent
- Extremely durable and rigid design
- Stocked in .150 thickness-sheet stock
- Other gauges available upon request
- Off-white/opaque in color

PCB BOARD SHIPPING

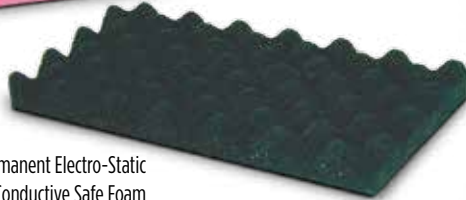
CORSTAT AND CFP MAILERS

ESD safe storage and shipping

- Made with durable materials • Can be customized to fit specific needs
- Pink and black foam options available • Cost savings and labor savings vs. bags



Standard CCI Premium Pink Static Dissipative Foam



Optional Permanent Electro-Static Dissipative or Conductive Safe Foam



Conductive Fluted Plastic



Corstat Mailer

STATIC DISSIPATIVE CONVOLUTED FOAM

Foam fingers will compress more with longer fingers for more weight

FOAM CODES
A = 3/4" F x 1/4" B
B = 1-1/8" F x 3/8" B
X = Customize

For more information visit www.corstat.com/Mailers

Rule to Determine Mailer Height ID:

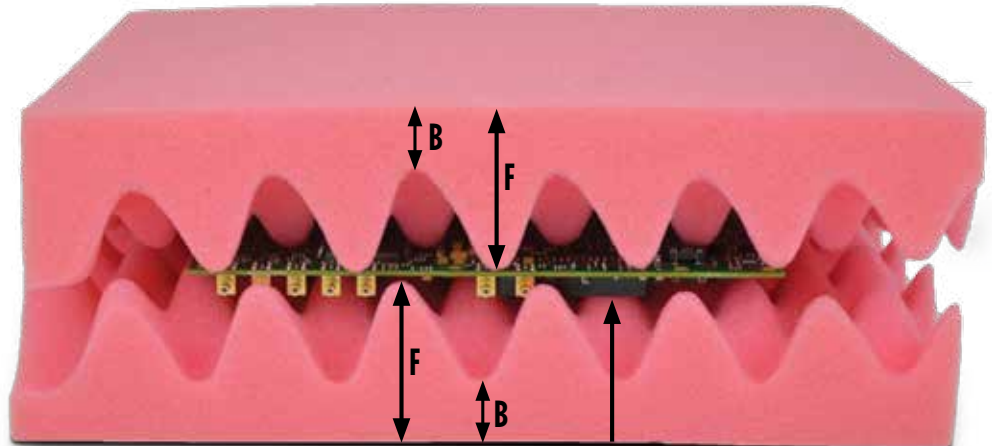
$$\text{Finger} + \text{Finger} + \text{PCB} = \text{X}$$

$$\text{X} - 1/4" \text{ to } 1/2" \text{ (for compression)} = \text{Mailer ID}$$

Example: "B" Foam = 1-1/8" Finger and the PCB = 3/4"
 $1-1/8" (F) + 1-1/8" (F) + 3/4" (PCB) = 3"$
 $3" - 1/2" = 2-1/2" \text{ Mailer ID}$

Allow 1"-2" on all 4 Sides of the PCB to Determine the Length and Width

Example: PCB = 7" x 5"
 Mailer ID = 8" x 6"



F = Finger B = Base PCB

STANDARD SIZES

CCI P/N	SIZE L X W X H (I.D.)	FOAM CODE	NUMBER / CASE
3631	4 x 4 x 2"	A	81
3080-1	7 x 5 x 1-1/2"	A	58
3090-2	7 x 5 x 2-1/2"	B	36
3180-3	9 x 7-1/2 x 1-1/2"	A	32
3190-4	9 x 7-1/2 x 2-1/2"	B	18
3220-5	10-1/2 x 8-1/2 x 1-1/2"	A	22
3230-6	10-1/2 x 8-1/2 x 2-1/2"	B	14
3310-7	12-1/2 x 10-1/2 x 1-1/2"	A	15
3320-8	12-1/2 x 10-1/2 x 2-1/2"	B	9
3500-10	15-1/2 x 12-1/2 x 2-1/2"	B	4
3420-13	14-7/8 x 6-5/8 x 2"	A	15
3610-12	20-1/2 x 15-1/2 x 2-1/2"	B	No Case

CFP options available by adding "CFP" to the beginning of part numbers listed above
 Example: CFP3631 = 3631 mailer in Conductive Fluted Plastic

CCI P/N	SIZE L X W X H (I.D.)	FOAM CODE
3641	5-3/4 x 6-1/4 x 2-1/2"	B
3651	7 x 7 x 5"	X
3661	8 x 8 x 1-1/2"	A
3671	9-1/8 x 14-3/4 x 1-1/2"	A
3681	9 x 14 x 2-1/2"	B
3691	10 x 10 x 4-1/4"	B
3701	11 x 7-3/4 x 2-7/8"	B
3711	12 x 12 x 3"	B
3721	13-1/2 x 13-1/2 x 2"	A
3490-9	15-1/2 x 12-1/2 x 1-1/2"	A
3525-14	16 x 12-1/4 x 3-1/2"	B
3731	18 x 12 x 3-1/2"	B

Add "-M" to part number for knocked down mailer with no foam
 Example: 3631-M = 3631 mailer shipped knocked down and without foam

CCI P/N	SIZE L X W X H (I.D.)	FOAM CODE
3763	16-1/2 x 10-1/2 x 6-1/2"	X
3762	17-1/4 x 10-1/2 x 5-3/4"	X
3568-15	18-7/8 x 17-5/8 x 1-3/4"	A
3765	19-1/4 x 16-3/4 x 5-5/8"	X
3741	20 x 19 x 2"	A
3767	20-1/4 x 17-3/4 x 5-5/8"	X
3600-11	20-1/2 x 15-1/2 x 1-1/2"	A
3766	21-1/4 x 12-1/2 x 4-1/2"	X
3751	23 x 16-1/2 x 5"	X
3764	26-3/4 x 6-1/4 x 6"	X
3768	20-1/4 x 17-1/2 x 4"	X

Add "L" for top foam to be laminated, "2L" for top and bottom foam to be laminated
 Example: 3631-2L = 3631 mailer with foam laminated top and bottom

CONDUCTIVE BLOW MOLDED PLASTIC SHIPPERS

Ideal for high-value components and printed circuit boards

- Double wall construction • ESD and physical protection
- Custom thermoformed and foam interiors are available

CCI P/N	SIZE L X W X H (I.D.)
50019	5-1/16 x 2-3/4 x 1"
50014	8-15/16 x 6-5/8 x 1-1/4"
50015	11-7/8 x 8-13/16 x 1-1/4"
50016	12-3/4 x 10-1/2 x 1-3/4"

For more information visit www.corstat.com/BlowMoldedCases



Choose from CCI's many foam options. Interiors can be die-cut, router cut, or water jet cut to your device

Optional Thermoformed Inserts

CORSTAT BULK SIMMS SHIPPERS

Minimize space and cost with smaller components

- Low cost, recyclable material • ESD safe static shielding
- Foam minimizes damage during shipping
- Partitions can be removed to create larger cells

CCI P/N	SIZE L X W X H (I.D.)	DESCRIPTION
CSP25	14-7/8 x 6-1/16 x 1-5/8"	25 Cells 5-3/8 x 1/2 x 1-1/4" or 50 Cells 2-5/8 x 1/2 x 1-1/4"
CSP50	14-7/8 x 11-15/16 x 1-5/8"	50 Cells 5-3/8 x 1/2 x 1-1/4" or 100 Cells 2-5/8 x 1/2 x 1-1/4"

For more information visit www.corstat.com/Simms



COMPONENT SHIPPING

INJECTION MOLDED BOXES

Vastly improved design with dependable ESD protection

IMPROVED BOX STYLE

- Stronger hinges and latches
- Tongue and groove closure
- Thicker, stronger walls

EASY TO ORDER-READY TO USE

- Available in small case lots
- Arrive completely assembled
- Ask about custom inserts

STOCK PART NUMBER	DIMENSIONS	CASE QUANTITY	PILLOWSTAT PART NUMBER
2020	2.0 x 2.0 x .25"	100	PP2020
2525	2.56 x 2.56 x .50"	150	PP2525
2820	2.875 x 2.0 x .50"	100	NOT AVAILABLE
2535	3.5 x 2.56 x .50"	100	PP2535
2535-75	3.5 x 2.56 x .75"	50	PP2535-75
2535-100	3.5 x 2.56 x 1"	50	PP2535-100
3545	4.56 x 3.5 x .50"	50	PP3545

For more information visit: www.corstat.com/InjectionMolded



Thicker and stronger outer walls



Stronger hinges and latches



Tongue and groove closure



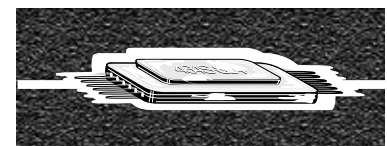
PILLOWSTAT

Super soft ESD foam for "Surface Mount" Technology

- Perfect for fragile, sensitive and expensive components
- ESD safe foam forms around the parts
- No tooling required
- Provides great physical protection
- Fits multiple sized components

CCI P/N	SIZE L X W X H (I.D.)	QTY/CASE
PP2020	2 x 2 x 1/4"	100
PP2525	2-9/16 x 2-9/16 x 1/2"	150
PP2535	2-9/16 x 3-1/2 x 1/2"	100
PP3545	4-5/8 x 3-1/2 x 1/2"	50
PP7035	7 x 3-1/2 x 1/2"	50

For more information visit: www.corstat.com/Pillowstat



ESD Safe Foam Forms Around the Part



THERMOFORMED INSERTS FOR INJECTION MOLDED BOXES

Custom inserts provide exact fit with proven durability

- Custom, cost-effective, and ESD safe
- Exact fit and part counts for your application
- Dissipative, permanently dissipative or conductive materials available
- Fitted into any stock size injection molded box
- Injection molded boxes are ESD safe, very durable, and available in small case lots

COMPAK PLASTIC INSERTS AND CUTTING DIES SAVE YOU MONEY

Benefits of Compak inserts:

- Low cost, ESD safe, custom inserts
- Utilize CCI master tooling program
- Exact fit and part counts
- Dissipative, permanently dissipative or conductive materials





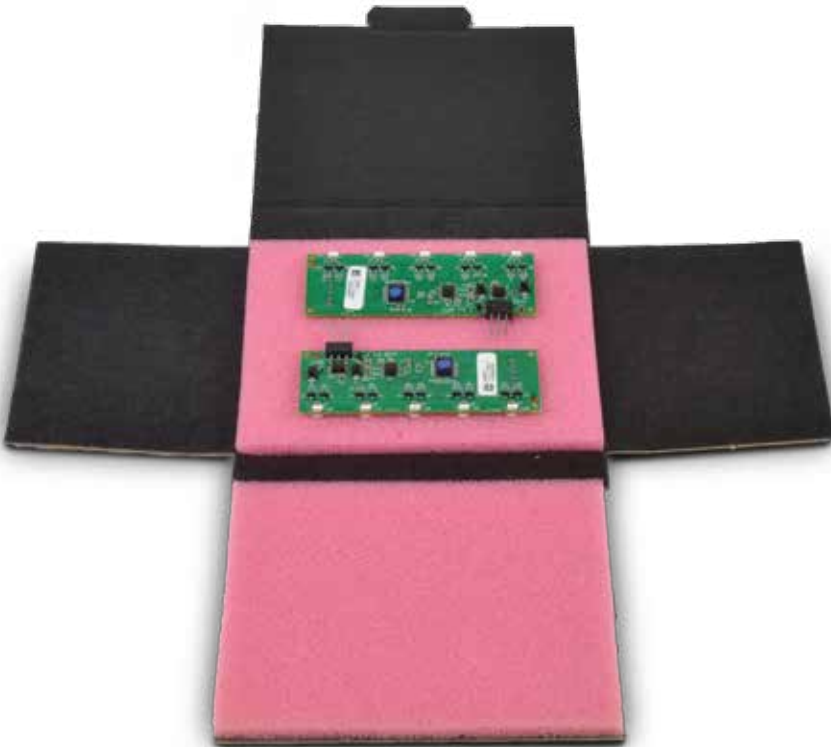
CORSTAT PILLOWSTAT FOLDERS

Ideal for a wide variety of electronics assemblies

- “Form-fit” cushioning protection
- Permanently ESD safe conductive foam
- No tooling is required
- Corstat static shielding outer material

CCI STOCK PART NUMBER	IC SHIPPER DIMENSIONS
PPF2525	2-9/16 x 2-9/16 x 1/2"
PPF3515	3-1/2 x 1-1/2 x 1/2"
PPF2535	3-1/2 x 2-9/16 x 1/2"
PPF3545	4-5/8 x 3-1/2 x 1/2"
PPF7035	7 x 3-1/2 x 1/2"

For more information visit: www.corstat.com/PillowstatFolders



CORSTAT ANTISTAT FOLDBPAK

Ideal for ball grid arrays and surface mount

- Static dissipative foam cushioning
- Corstat static shielding outer material
- No tooling is required
- Great for shipping surface mount components

CCI STOCK PART NUMBER	IC SHIPPER DIMENSIONS
CASF2525	2-9/16 x 2-9/16 x 1/2"
CASF3515	3-1/2 x 1-1/2 x 1/2"
CASF2535	3-1/2 x 2-9/16 x 1/2"
CASF3545	4-5/8 x 3-1/2 x 1/2"
CASF7035	7 x 3-1/2 x 1/2"

For more information visit: www.corstat.com/CorstatFoldpak

CORSTAT IC SHIPPERS

Choose the right IC Shipper for your application



THE TRADITIONAL IC SHIPPER

Ideal for through hole technology

- Ideal for through hole technology
- Conductive pin insertion grade bottom foam
 - Pink anti-static top foam
- One way shipping/short-term use
- Static shielding Corstat mailer

CCI STOCK PART NUMBER	IC SHIPPER DIMENSIONS
IC5000	2-1/2 x 1-1/4 x 1"
IC5010	3-1/2 x 1-1/4 x 1"
IC5020	4-1/2 x 1-1/2 x 1"
IC5025	2-3/4 x 2-3/4 x 15/16"
IC5030	3-7/16 x 2-1/8 x 15/16"
IC5040	3-3/4 x 3-3/4 x 1"
IC5041	4-1/2 x 3-3/4 x 1"
IC5045	5-3/4 x 2-3/4 x 15/16"
IC5050	7 x 3-1/2 x 1"
IC5055	5-3/4 x 5-3/4 x 15/16"
IC5060	14-3/4 x 5-3/4 x 15/16"

THE SUPER-SOFT IC SHIPPER

Ideal for Surface Mount Technology

- Permanently dissipative foam
 - Super soft cushioning
- Static shielding Corstat mailer
- Nests around small components
 - Returnable/long-term use
- Ideal for small fragile assemblies

CCI STOCK PART NUMBER	IC SHIPPER DIMENSIONS
IC5000-SS	2-1/2 x 1-1/4 x 1"
IC5020-SS	4-1/2 x 1-1/2 x 1"
IC5030-SS	3-7/16 x 2-1/8 x 15/16"
IC5040-SS	3-3/4 x 3-3/4 x 1"
IC5050-SS	7 x 3-1/2 x 1"

For more information visit: www.corstat.com/ICShippers

COMPONENT SHIPPING

CORSTAT COMPONENT SHIPPERS



JEDEC PADS

Use a Corstat or Conductive Fluted Plastic (CFP) pad to cover a loaded Jedec Tray. Saves cost of using an empty tray.

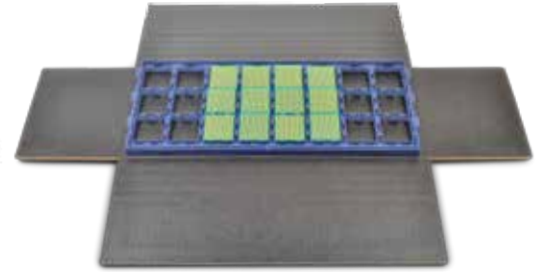
CCI P/N	SIZE L X W X H (I.D.)
C7295P	12-7/8 x 5-3/8 x 1/8"
CFP7295P	12-7/8 x 5-3/8 x 1/8"



CORSTAT REEL FOLDERS

Corstat multi-depth folder for 7" reels or 13" reels. Add foam pads as an option.

CCI P/N	SIZE L X W X H (I.D.)
CRF77	7-1/4 x 7-1/4 x 1/2 to 2"
CRF1313	13-1/8 x 13-1/8 x 1/2 to 2"



CORSTAT JEDEC FOLDER

Corstat multi-depth folder for Jedec Tray shipping. Add foam pads or Jedec pads as an option.

CCI P/N	SIZE L X W X H (I.D.)
CJF1251	12-7/8 x 5-3/8 x 1/4 to 2"

PERMANENT ESD SAFE FOAMS

CCI offers static safe foams in sheet form that have permanent ESD safe properties. Pink foams have a variable, limited shelf life and should be used for short term usage or monitored. Permanent CCI foam products are excellent for cleanliness and longevity. The permanent black foams are ideal for shelf liners, tote cushions, long term storage, or reusable shipping applications.

CONDUCTIVE CROSSLINK PE

10E3 - 10E6 Pin Insertion Grade

CCI P/N	SIZE (O.D.)
CFM3939	39 x 39 x 1/4"
CFM1939	19-1/2 x 39 x 1/4"
CFM3939-38	39 x 39 x 3/8"
CFM2436-25	24 x 36 x 1/4"
CFM2436-38	24 x 36 x 3/8"

CONDUCTIVE URETHANE - SOFT

10E2 - 10E4 - Cushioning

CCI P/N	SIZE (O.D.)
CFPU2436-25	24 x 36 x 1/4"
CFPU2436-38	24 x 36 x 3/8"
CFPU2436-50	24 x 36 x 1/2"

DISSIPATIVE CROSSLINK PE

10E5 - 10E9 Shelf Liner / Tote Pad Grade

CCI P/N	SIZE (O.D.)
SDFM3740-25	37-1/2 x 40 x 1/4"
SDFM3740-38	37-1/2 x 40 x 3/8"
SDFM3740-50	37-1/2 x 40 x 1/2"

DISSIPATIVE URETHANE - SOFT

10E4 - 10E10 - Cushioning

CCI P/N	SIZE (O.D.)
SDPU2436-25	24 x 36 x 1/4"
SDPU2436-38	24 x 36 x 3/8"
SDPU2436-50	24 x 36 x 1/2"

CONDUCTIVE EVA

10E3 - 10E6 Low Fod / Low Abrasion

CCI P/N	SIZE (O.D.)
CFME2436-18	24 x 36 x 1/8"
CFME2436-25	24 x 36 x 1/4"
CFME2436-38	24 x 36 x 3/8"

PILLOWSTAT

10E2 - 10E5 Fragile Components

CCI P/N	SIZE (O.D.)
PPF130	34 x 21 x 1/8"
PPF260	34 x 18-1/2 x 1/4"
PPF300	34 x 18-1/2 x .30"



Additional foams are available, but are not in stock

Need different sizes, thicknesses, custom die cutting, waterjet cutting, shadow trays, or package designs? Contact CCI Customer Service for design help and sampling.

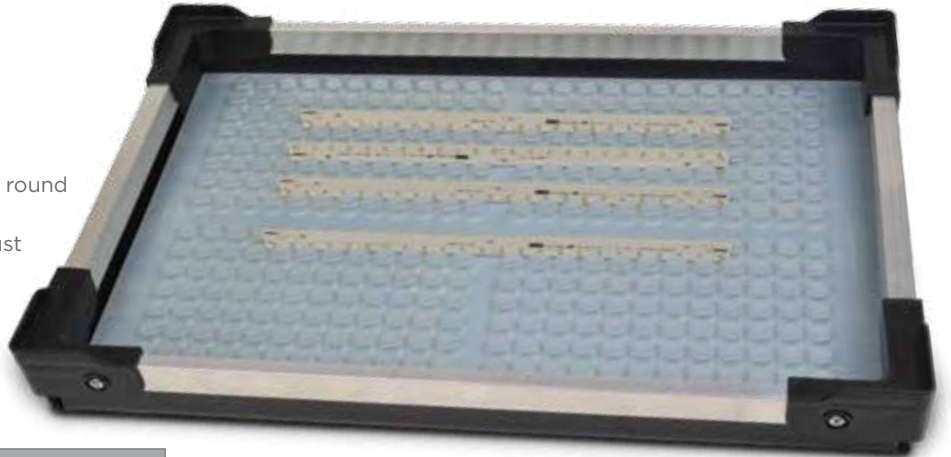
FOAM NAME	ELECTRICAL SPEC
PILLOWSTAT DISSIPATIVE	10E5-10E9
CONDUCTIVE URETHANE (FIRM)	10E2-10E4
DISSIPATIVE URETHANE (FIRM)	10E4-10E9
9200 SUPER SOFT	10E2-10E4
JEFF FOAM	10E2-10E4

*These foams are subject to minimum order quantities

PLASTIC GRID TRAY

Universal line of products to keep your boards organized & protected

- Boards can be placed on X or Y axis
- Trays can hold irregularly shaped boards, even round or curved boards
- PGTs can be fitted into DuraStat Trays for robust handling applications
- No tooling is required
- Permanent static dissipative surface
- Cost savings versus injection molded racks
- Ideal for memory boards and LED boards
- 0.07" spacing between 0.25" tall rows



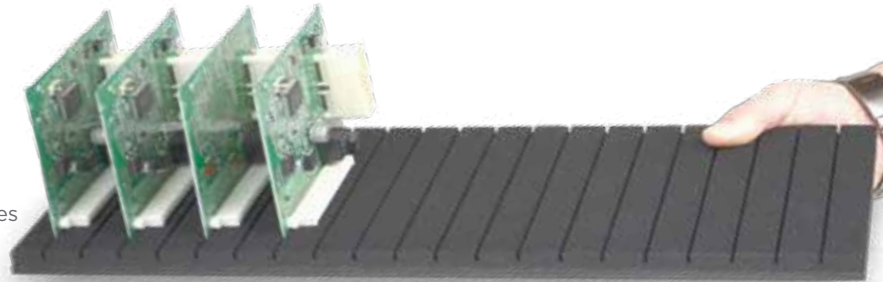
CCI STOCK PART NUMBER	L X W X H	DESCRIPTION
PGT-0806	8.2 x 5.65 x .375"	Dissipative Grid Tray with CFP Bottom
PGT-1806	18 x 5.65 x .375"	Dissipative Grid Tray with CFP Bottom
PGT-1108	11.3 x 8.2 x .375"	Dissipative Grid Tray with CFP Bottom
DT6201-PGT	18 x 12 x 2"	DuraStat Tray with Grid Insert
DT6202-PGT	24 x 18 x 2.125"	DuraStat Tray with Grid Insert

For more information visit: www.corstat.com/PlasticGridTray

SAFE RACK

Cushioned ESD protection on a rigid hardboard backer

- Safe Rack can hold irregularly shaped boards, even round or curved boards
- .20" deep slots for boards with components close to edges
- Permanent static dissipative surface
- Cost savings versus injection molded racks
- Ideal for memory boards and LED boards



CCI STOCK PART NUMBER	L X W X H	NUMBER OF SLOTS	SPACING	DEPTH	SLOT WIDTH
SR1806	18 x 6 x .65" (OD)	20	.875	.20	.0625

For more information visit: www.corstat.com/SafeRack

NEW!

PEDESTAL FOLDER

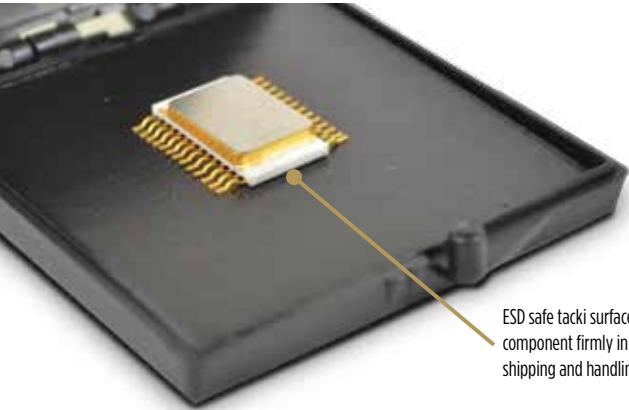
ESD safe component handling fit for multiple devices

- Multiple devices with leads are suspended while holding the body to the tacki surface
- Component is held in place by permanently ESD safe foam
- Made-to-order / customizable
- Provides ESD and physical protection
- Contact CCI to learn more!



TACKI PAK COMPONENT HANDLING CASES

Conductive injection molded plastic cases



ESD safe tacki surface holds your component firmly in place throughout shipping and handling processes.

TACKI PAK SPECIFICATIONS

ESD SAFE PROPERTIES

Surface resistance of Tacki Pak components

TP hinged boxes and trays..... 10^3 - 10^6 ohms

Tacki surface..... 10^4 - 10^{10} ohms

TACK LEVELS

A measure of how much force is required to remove an object from Tacki Pak surface

Tack Level	Rating Range
Level I.....	2.0 - 5.0
Level II.....	6.0 - 10.0
Level III.....	10.0 - 15.0

Range is in ft/lbs

TP2020	TP2525	TP2535	TP3545
2 x 2 x .25"	2.5625 x 2.5625 x .5"	2.5625 x 3.5 x .5"	3.5 x 4.625 x .5"
Case lots of 100	Case lots of 100	Case lots of 100	Case lots of 50
Part # TP2020-I	Part # TP2525-I	Part # TP2535-I	Part # TP3545-I
Part # TP2020-II	Part # TP2525-II	Part # TP2535-II	Part # TP3545-II
Part # TP2020-III	Part # TP2525-III	Part # TP2535-III	Part # TP3545-III



PEDESTAL TACKI PAK

Suspend and protect fragile leads

- New design suspends your leads while holding the body on the tacki surface
- Component is held in place by permanently ESD safe foam
- No tooling is required
- Provides ESD and physical protection
- Cost saving versus "gel-type" packaging

CCI STOCK PART NUMBER	PEDESTAL-PAK ID	PEDESTAL DIAMETER
PTP2525-200	2-9/16 x 2-9/16 x 1/2"	.203
PTP2525-375	2-9/16 x 2-9/16 x 1/2"	.375
PTP2525-500	2-9/16 x 2-9/16 x 1/2"	.500
PTP2525-750	2-9/16 x 2-9/16 x 1/2"	.750
PTP3545-750	4-5/8 x 3-1/2 x 1/2"	.750



GRID-PAK

Organize and sort small components

- Dissipative tacki coating • Shielding case • Non-adhesive
- IPA washable • Fully ESD safe • Non-contaminating
- Cost saving versus "gel-type" packaging

CCI STOCK PART NUMBER	GRID-PAK ID	CASE QTY
GTP2020	2 x 2 x 1/4"	100
GTP2525	2-9/16 x 2-9/16 x 1/2"	100
GTP2535	2-9/16 x 3-1/2 x 1/2"	100
GTP3545	3-1/2 x 4-5/8 x 1/2"	50

TACKI JEDEC STYLE TRAY

One design to fit many component sizes

- IPA cleanable
- Completely ESD safe
- Features tacki pad to secure components
- Reusable and cleanable
- Permanent ESD properties

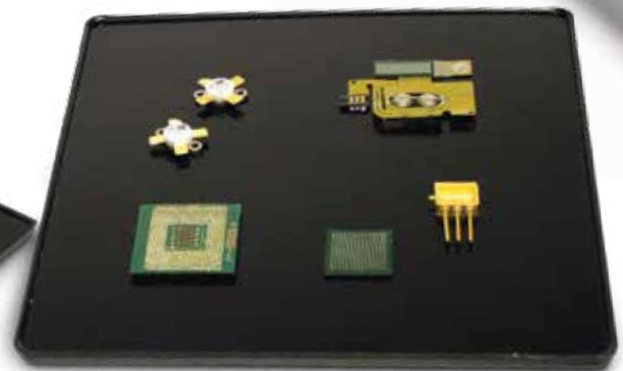
Components are secured firmly on the permanently ESD safe tacki surface



TACKI PAK HANDLING TRAYS AND SHEETS

Ideal for workstations

TPSHEET	TP4040	TP9090
20 x 17.5 x .090"	4 x 4 x .090"	9 x 9 x .125"
Case lots of 5	Case lots of 10	Case lots of 10
Part # TPSHEET-I	Part # TP4040-I	Part # TP9090-I
Part # TPSHEET-II	Part # TP4040-II	Part # TP9090-II



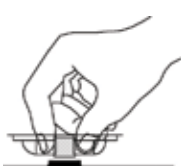
SM COMPAK SHIPPER

Protects against damage of fine pitched leads and against ESD damage. This unique design suspends leads during shipping and handling and allows for removal without touching the component.

- One package protects many sizes
- Eliminates lead damage
- Corstat shipper provides static shielding
- 1, 2, 4 and 10 packs available

CCI P/N	SIZE L X W X H (I.D.)	# OF DEVICES*	QTY/CASE*
SM5025	2-3/4 x 2-3/4 x 15/16"	1	100
SM5045	5-3/4 x 2-3/4 x 15/16"	2	50
SM5055	5-3/4 x 5-3/4 x 15/16"	4	25
SM5060	14-3/4 x 5-3/4 x 15/16"	10	15

For more information visit: www.corstat.com/SMCompak



Dissipative adhesive allows part to be picked up without touching operators hands



Handle and ship component safely in dissipative insert



Squeeze dissipative plastic insert to release component safely



TAPE AND REEL

ADJUSTABLE REEL TOTES

Provides adjustability for your different reel sizes

- Space utilization
- Compatibility with vertical carousels
- 24" depth fits standard carousel systems
- Standard CCI product
- Custom bar coding options are available

CCI STOCK PART NUMBER	TOTE SIZE (O.D.)	CELL SIZE	NUMBER OF CELLS
Reel 7-13	23-1/4 x 15-5/8 x 6-3/8"	1 x 7 x 6-1/2	40
Reel 7-13	23-1/4 x 15-5/8 x 6-3/8"	1 x 13 x 6-1/2	20
Reel 15	23-1/4 x 15-5/8 x 6-3/8"	1 x 14-7/8 x 6-1/2	20



REEL STORAGE

Physical protection meets ESD protection

- Economical
- Eliminate insulative plain corrugated
- Reduce bagging
- ESD shielding
- ESD program compliance

CCI P/N	SIZE: L X W X H (O.D.)	BUNDLE*
1829	18 x 2 x 9"	25
CFP 1829	18 x 2 x 9"	25
1849	18 x 4 x 9"	10
CFP 1849	18 x 4 x 9"	10
1869	18 x 6 x 9"	10
CFP 1869	18 x 6 x 9"	10
2429	24 x 2 x 9"	10
CFP 2429	24 x 2 x 9"	10
2449	24 x 4 x 9"	10
CFP 2449	24 x 4 x 9"	10



FIFO REEL STORAGE

First in, first out system

- Line-bent and sonic welded construction
- Oldest reels are always used first
- Thumb notch for easy access
- 7" and 13" versions
- Hard plastic makes for rigid design
- Strong, durable, & permanently conductive

CCI P/N	DESCRIPTION	SIZE L X W X H (I.D.)	RAISED BASE DIMENSION
FIFO-7	7" .090 Conductive Styrene FIFO Bin	7.375 x 7.375 x 8.5" OD	1"
FIFO-13	13" .090 Conductive Styrene FIFO Bin	13.375 x 13.375 x 8.5" OD	1"



For more information visit: www.corstat.com/ReelStorage

BENT-OVER REEL STORAGE SOLUTIONS

Providing ESD and physical protection for your reels

- Double wall construction
- Increased strength and durability
- Corstat version ships flat
- Spacing is 1"
- Adjustable partitions
- ESD protection
- ESD covers available

CCI STOCK PART NUMBER	BIN SIZES (L X W X H)	SHIPS KNOCKED-DOWN	SHIPS ASSEMBLED
Reel-7B0	18 x 9-7/8 x 7-3/8"	X	
CFP Reel-7B0	18 x 9-7/8 x 7-3/8"		X
Reel-13B0	18 x 15-7/8 x 13-3/8"	X	
CFP Reel-13B0	18 x 15-7/8 x 13-3/8"		X
Reel-7B0-23	23 x 9-7/8 x 7-3/8"	X	
CFP Reel-7B0-23	23 x 9-7/8 x 7-3/8"		X
Reel-13B0-23	23 x 15-7/8 x 13-3/8"	X	
CFP Reel-13B0-23	23 x 15-7/8 x 13-3/8"		X



CORSTAT AND CFP REEL TOTES

Increased durability and flexibility

- Durable Corstat or CFP construction
- Plastic ribbing holds reels in place
- Wire frame reinforced
- Ships assembled
- Feature handles and cover

CCI P/N	DESCRIPTION CORSTAT	SIZE L X W X H (I.D.)
RB-2007	7" Corstat Reel Storage Bin	19-3/4 x 7 x 7"
RB-1313	13" Corstat Reel Storage Bin	19-3/4 x 13 x 13"
CFP RB-2007	7" CFP Reel Storage Bin	19-3/4 x 7 x 7"
CFP RB-1313	13" CFP Reel Storage Bin	19-3/4 x 13 x 13"



For more information visit: www.corstat.com/ReelStorage



CORSTAT AND CFP BINS

In-plant protection for Dip Tubes, ICs, and other components

- Cleans up your storage areas
- Eliminates the need for bags
- Permanently ESD safe
- Cost savings & labor savings vs. bags
- Available in open or stackable formats

OPEN BINS

CCI P/N	SIZE L X W X H (O.D.)
AR 1050	4-1/4 x 3-5/8 x 2-5/8"
AR 1060	5-3/4 x 3-5/8 x 2-5/8"
1150	7 x 16 x 4"
0900	9 x 4 x 4-1/2"
0950	12 x 2 x 4-1/2"
1001	12 x 4 x 4-3/8"
1003	12 x 6 x 4-1/2"
1010	12 x 8 x 4-1/4"
1020	12 x 12 x 4-1/2"
1151	12-5/8 x 9-1/4 x 2-1/8"
1167	15 x 12 x 4-1/2"
1165	15-1/4 x 4-1/4 x 14-3/4"
1170	19 x 2-1/4 x 4-1/8"
1051	18 x 2 x 4-1/2"
1052	18 x 4 x 4-1/2"
1053	18 x 6 x 4-1/2"
1054	18 x 8 x 4-1/2"
1062	18 x 12 x 4-1/2"
1829	18 x 2 x 9"
1849	18 x 4 x 9"

CCI P/N	SIZE L X W X H (O.D.)
1152	18-5/8 x 4-1/4 x 6-5/8"
1153	18-5/8 x 8-1/4 x 6-5/8"
1154	18-5/8 x 15-1/4 x 6-5/8"
1155	22-1/8 x 4-1/4 x 4-5/8"
1156	22-1/8 x 6-1/4 x 4-5/8"
1157	22-1/8 x 8-1/4 x 4-5/8"
1171	24-3/4 x 2-1/4 x 4-1/8"
1158	24-1/2 x 3-1/2 x 6-3/4"
1159	24 x 4 x 4-1/2"
1160	24-3/4 x 6-1/4 x 8-1/4"
1161	24 x 11-1/4 x 7-3/4"
1162	24-3/4 x 12-1/4 x 4-1/4"
1163	24-5/8 x 14-1/4 x 4-1/8"
1105	24-3/4 x 4-1/4 x 4-5/8"
1125	24-3/4 x 6 x 4"
1144	24-3/4 x 8-1/4 x 4-5/8"
1164	25-5/8 x 2-1/4 x 1-5/8"
2429	24 x 2 x 9"
2449	24 x 4 x 9"

STACKABLE BINS

CCI P/N	SIZE L X W X H (O.D.)
2035	12 x 4 x 4-1/2"
2065	12 x 7 x 4-1/2"
2085	12 x 12 x 4-1/2"
2095	18 x 4 x 4-1/2"
2105	18 x 7 x 4-1/2"
2155	24-3/4 x 4-1/4 x 4-3/4"
2185	24 x 6 x 4-5/8"
2015	24-7/8 x 8 x 4-1/2"

Custom document holders are available in our "PCB Board Handling" section on page 30

*Bins ship in bundles of 25. \$10.00 bundle break charge.

Above sizes also available in Conductive Fluted Plastic. Add CFP to part number.



KITTING TRAYS

A durable in-plant handling and storage solution

CCI P/N	SIZE L X W X H (O.D.)	# OF CAVITIES	CAVITY SIZE (I.D.)	COVER #
13025	9-1/4 x 7-1/4 x 1-3/4"	4	3-3/4 x 2-3/4 x 1-1/8"	13026
13030	10-1/2 x 8-3/4 x 1-1/2"	12	2-1/4 x 2 x 1-3/16"	13031
13035	13-1/4 x 13-1/4 x 13/16"	25	2-3/8 x 2-3/8 x 1"	13036
13040	14-1/2 x 10-1/8 x 1-3/4"	9	3-1/2 x 2-3/4 x 1-1/4"	13041
13045	18-3/8 x 16-3/8 x 1-1/4"	20	4-1/8 x 2-13/16 x 1"	13046
13050	14-1/8 x 10-1/8 x 1-3/4"	12	3 x 3 x 1-1/4"	13051
13055	10-1/2 x 8-3/4 x 13/16"	20	2 x 1 x 7/8"	13031
13060	16-1/8 x 10-5/8 x 1-7/8"	9	3-1/8 x 2-3/4 x 1-1/4"	13061
		3	3-7/8 x 2-3/4 x 1-1/4"	
13080	14-3/8 x 10-1/8 x 1-7/8"	20	2-3/8 x 2 x 1-1/4"	13081
13090	8-1/4 x 6-1/4 x 1-5/8"	12	1-1/2 x 1-1/2 x 1-1/8"	13091
1230-10	9-1/4 x 7-3/8 x 1-1/8"	10	3 x 1-1/2 x 1"	NA
1230-5	9-1/4 x 7-3/8 x 1-1/8"	5	6-1/2 x 1-1/2 x 1"	NA
2015CT	20-3/4 x 15-1/4 x 3/4"	1	-----	NA

For more information visit: www.corstat.com/KittingTrays



TOOL CUBBY

Workstation friendly storage solution

- Versatile design
- Workstation friendly
- Durable, sturdy, and long-lasting
- Provides ESD protection
- Economical
- ESD properties are permanent

CCI STOCK PART NUMBER	TOOL CUBBY DIMENSIONS
TC 1176	11-3/4 X 8-1/2 X 6-1/4" OD

For more information visit: www.corstat.com/ToolCubby



DRAWER CABINET

Storage and organization solution

- Multiple cabinet and drawer sizes
- Permanently ESD safe
- Helps organize your workstations
- Economical option for small components
- Rigid double wall construction

CCI P/N	SIZE L X W X H (O.D.)	NUMBER OF DRAWERS	NUMBER OF CELLS PER DRAWER	CELL SIZE (I.D.)
DC1230	10 x 7-5/8 x 7-7/8"	5	10	3 x 1-1/2 x 1"
DC1231	10 x 7-5/8 x 7-7/8"	5	5	6-1/2 x 1-1/2 x 1"
DC1330	11-3/8 x 9 x 9-1/4"	5	12	2-1/4 x 2" x 1-3/16"
DC1340	15-1/4 x 10-3/4 x 11-1/4"	5	9	3-1/2 x 2-3/4 x 1-1/4"
DC1350	15-1/4 x 10-3/4 x 11-1/4"	5	12	3 x 3 x 1-1/4"

For more information visit: www.corstat.com/DrawerCabinet



SHADOW TRAYS

An organized, workstation-friendly ESD solution

- Completely customized to your specifications
- First article provided to ensure proper form & function
- Available with plastic top and/or bottom pad
- No minimum quantities
- An ESD safe way to organize your workstation



Shadow Trays are completely customizable to your specifications. CCI works from photos or tracings of your layout.

ESD CART COVERS

Ensuring your cart contents are static-safe

- Customizable to any size or requirement
- Custom printing available
- Protects product inside from ESD damage
- Straps hold cover up when pulling product from carts



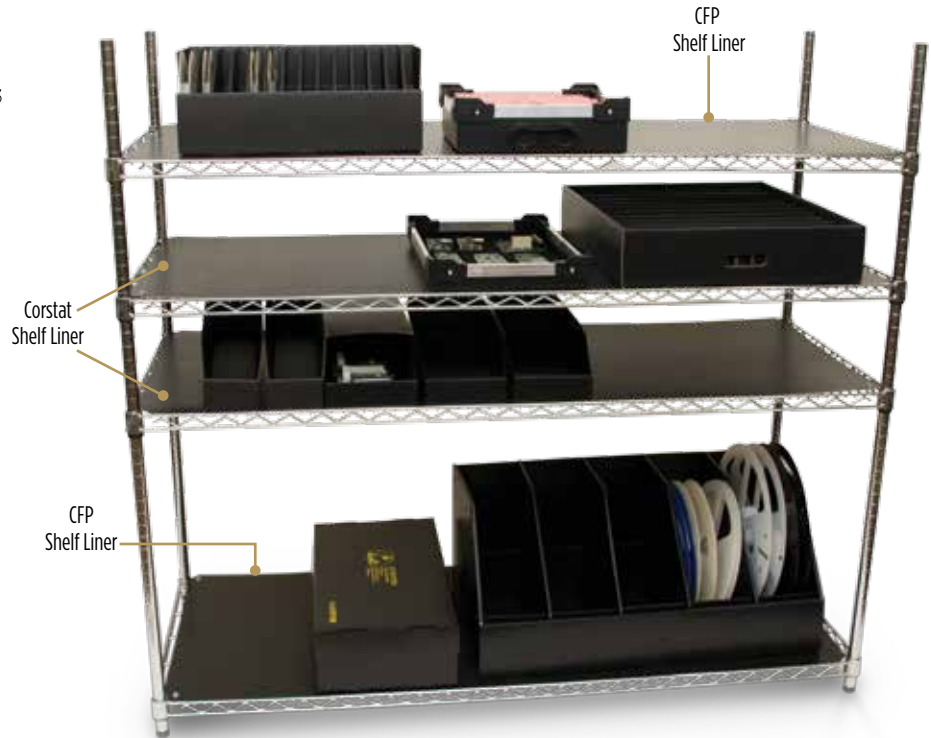
Custom velcro document holders can be added

SHELF LINERS

ESD safe shelf liners to fit a variety of sizes

- Economical and ESD safe
- Available in Corstat and CFP
- Angled corners will fit standard shelves
- Two snaps will fit wrist straps and ground cords

CCI P/N	ITEM	SIZE (O.D.)
SL1836-FP	CFP Shelf Liner	17-1/2 x 35-1/2 x 3/16"
SL2335-FP	CFP Shelf Liner	23-1/2 x 35-1/2 x 3/16"
SL2347-FP	CFP Shelf Liner	23-1/2 x 47-1/2 x 3/16"
SL2359-FP	CFP Shelf Liner	23-1/2 x 59-1/2 x 3/16"
SL2359-CT	Corstat Shelf Liner	23-1/2 x 59-1/2 x .080"
SL2347-CT	Corstat Shelf Liner	23-1/2 x 47-1/2 x .080"
SL1836-CT	Corstat Shelf Liner	17-1/2 x 35-1/2 x .080"
SL2436-CT	Corstat Shelf Liner	23-1/2 x 35-1/2 x .080"
SL2359-KS	KleanStat Flex Shelf Liner	23-1/2 x 59-1/2 x .040"
SL2347-KS	KleanStat Flex Shelf Liner	23-1/2 x 47-1/2 x .040"
SL1836-KS	KleanStat Flex Shelf Liner	17-1/2 x 35-1/2 x .040"
SL2436-KS	KleanStat Flex Shelf Liner	23-1/2 x 35-1/2 x .040"



ESD SAFE WASTEBASKETS

Additional protection for your workstation

- Available in Corstat and CFP
- Eliminates static charge
- Standard sizes
- No tooling necessary

CCI P/N	SIZE	MATERIAL
CWB	14-1/4 x 12-3/4 x 13-5/8"	Corstat
CFPWB	14 x 10 x 14"	CFP

Wastebaskets ship knocked down flat



Corrugated Waste Basket

Conductive Fluted Plastic Waste Basket



ESD TAPE

Secure your packaging with ESD Tape

- Non-charge generating
- Safe for all ESD applications
- Multiple uses
- Sold in sleeves of 6

CCI STOCK PART NUMBER	TAPE WIDTH	TAPE LENGTH
ESDT-2	2"	118'

For more information visit: www.corstat.com/ESDTape

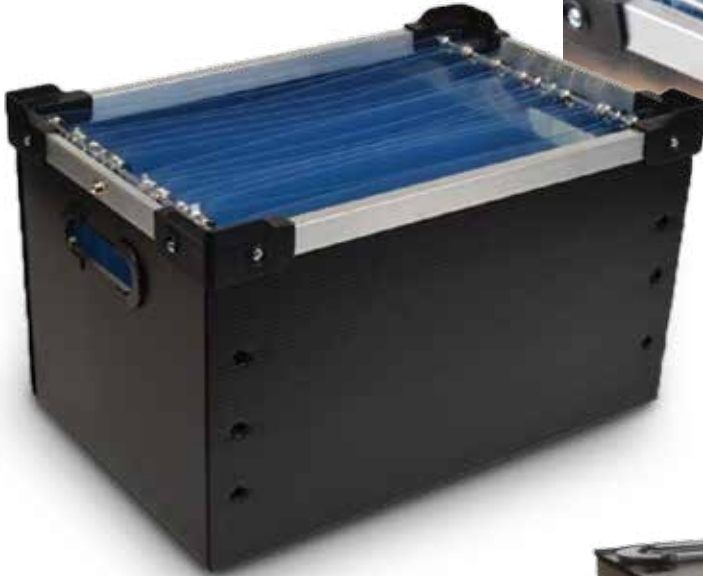
NEW!

KLEANSTAT FLEXTOTE

Versatile, durable, and permanently ESD storage and handling

- Flexible material allows for multiple board sizes and thicknesses
- DuraStat tote gives durable physical protection
- Low-FOD materials throughout
- Grommets along the wire frame allow for simple adjustment and organization of multiple boards

Contact CCI to begin the quotation process!



ADJUSTABLE GUIDE TOTE

Versatile, durable, and permanently ESD storage and handling

- Features a completely ESD safe package
- Conductive ribbing holds boards securely
- Totes are stackable & can be placed on their ends
- Durable material with permanent ESD properties
- Adjustable ribs accommodate multiple board sizes



CORSTAT IPH SERIES

Corstat conductive material

- Lowest cost - great static shielding
- Bent over, double walls for durability



DURASTAT CFP TOTES

Conductive Fluted Plastic

- Durable conductive fluted plastic
- Lightweight construction includes corner stackers



TWO GREAT TOTE OPTIONS FOR HANDLING ESD SENSITIVE PCB'S ASK US FOR A ROI ANALYSIS!

- 37 different Corstat tote sizes, and 40 different DuraStat tote sizes
- Both styles fit 533 different Corstat partition cell configurations - these will fit nearly any board family
 - Totes are durable and built to last in-plant or interplant
 - ESD safe while eliminating shielding bags and bagging labor
 - Clean bent over Corstat partitions

THREE WAYS TO FIND THE PERFECT IN-PLANT HANDLER FOR YOUR APPLICATION

1. SELECT CELL SIZES

See cell sizes on pages 26-27 and match your board size. Check for tote sizes below.

2. CHECK ONLINE

www.corstat.com/inplanthandlersfeatures an easy in-plant handler query. Just input your board size and see your options.

3. LET US DO THE WORK

Call or email your CCI distributor or CCI customer service person with your board sizes and let us do the selection work for you.

Note: for correct measurement—height is vertical, length is horizontal, and thickness is the cell width.

*STATIC SAFE standard foam tote pads and tote accessories available.

STOCK IN-PLANT HANDLERS AND PARTITION SETS ARE SHIPPED KNOCKED-DOWN FLAT (KDF) UNLESS SPECIFIED OTHERWISE.

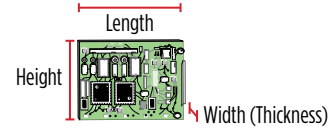
CCI P/N	TOTE SIZE (ID) (L X T X H)	DURASTAT P/N
4003*	18 x 10 x 18-7/8"	DT4003
4090*	18 x 10 x 18-7/8"	DT4090
4018	18-3/8 x 12-3/8 x 18-3/4"	DT4018
4015	22-3/4 x 12-1/2 x 15-1/2"	DT4015
4020	18-3/4 x 14 x 15"	DT4020
4530	18-5/8 x 15 x 14-1/4"	DT4530
4000-4	22-3/4 x 12-1/2 x 14"	DT4000-4
4000*	22-3/4 x 12-1/2 x 13"	DT4100
4080*	22-3/4 x 12-1/2 x 13"	DT4080
4830	18-3/8 x 12-3/8 x 13"	DT4830
4212	21-1/2 x 18-1/2 x 12-1/4"	DT4212
4430	18-5/8 x 15 x 12"	DT4430
4110	17-3/4 x 14-3/4 x 11-1/4"	DT4110
4100*	16-5/8 x 9-3/4 x 11-1/4"	DT4100
4005*	16-5/8 x 9-3/4 x 11-1/4"	DT4005
4820	18-3/8 x 12-3/8 x 11"	DT4820
4030	23-3/4 x 12-1/4 x 10-3/4"	DT4030
4050	20-1/4 x 16 x 10-1/2"	DT4050
4210	21-1/2 x 18-1/2 x 10-1/4"	DT4210
4330	18-5/8 x 15 x 10"	DT4330
4008	16-5/8 x 9-3/4 x 9-1/4"	DT4008

CCI P/N	TOTE SIZE (ID) (L X T X H)	DURASTAT P/N
4810	18-3/8 x 12-3/8 x 9"	DT4810
4208	21-1/2 x 18-1/2 x 8-1/4"	DT4208
4140	22-7/8 x 12-7/8 x 8"	DT4140
4130	18-5/8 x 15 x 8"	DT4130
4007*	16-5/8 x 9-3/4 x 7-1/2"	DT4007
4060*	16-5/8 x 9-3/4 x 7-1/2"	DT4060
4800	18-3/8 x 12-3/8 x 7"	DT4800
4040	18-1/2 x 10 x 6-3/4"	DT4040
4206	21-1/2 x 18-1/2 x 6-1/4"	DT4206
4001	22-3/4 x 12-1/2 x 6-1/4"	DT4001
4009*	18-1/2 x 13-3/4 x 6-1/8"	DT4009
4070*	18-1/2 x 13-3/4 x 6-1/8"	DT4070
4230	18-5/8 x 15 x 5-7/8"	DT4230
4006	16-5/8 x 9-3/4 x 5-5/8"	DT4006
4120	19-1/2 x 12-3/8 x 5-1/2"	DT4120
4012*	10-3/8 x 10-3/8 x 5-3/8"	DT4012
4204	21-1/2 x 18-1/2 x 4-1/4"	DT4204
4011*	10-3/8 x 10-3/8 x 4"	DT4011
4004	16-5/8 x 9-3/4 x 3-3/4"	DT4004
4002	16-5/8 x 9-3/4 x 2-3/4"	DT4002
4202	21-1/2 x 18-1/2 x 2-1/4"	DT4202

*Part numbers share a tote, but have different partition layouts

CORSTAT IN-PLANT HANDLERS

STANDARD CELL SIZES

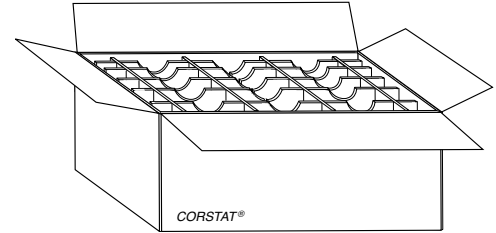


IN OUR CATALOG AND WEBSITE, THE CELL DIMENSIONS ARE DEFINED AS FOLLOWS:

Cell Length will accommodate the dimension of the circuit board that fits left to right in the cell opening. This is the dimension of the edge of the board that will rest on the bottom of the cell.

Cell Width will accommodate the "profile" of the circuit board. This is the thickness of the board with all of its leads and attached components taken into account.

Cell Height (Depth) will accommodate the dimension of the circuit board up and down as it sits in the cell.



Note: PH = Partition Height.

CCI P/N	SIZE L X W X H (I.D.)	PH	# OF CELLS
TOTE SIZE - 18-3/8 X 12-3/8 X 19"			
4018	7-7/8 x 1 x 18-3/4"	18-3/4"	20
4018-1	7-7/8 x 1-1/4 x 18-3/4"	18-3/4"	10
4018-2	16 x 1 x 18-3/4"	18-3/4"	10
4018-3	16 x 2-1/4 x 18-3/4"	18-3/4"	5
TOTE SIZE - 18 X 10 X 19"			
4090	8-1/4 x 7/8 x 18-3/4"	17"	15
4090-1	8-1/4 x 2 x 18-3/4"	17"	7
4003	16 x 3/4 x 18-3/4"	19"	10
4003-1	16 x 1-3/4 x 18-3/4"	19"	5
TOTE SIZE - 22-3/4 X 12-1/2 X 15-1/2"			
4015	4-7/8 x 1 x 15-1/4"	15-1/4"	40
4015-1	4-7/8 x 2-1/4 x 15-1/4"	15-1/4"	20
4015-2	5-1/4 x 1-5/8 x 15-1/4"	15-1/4"	24
4015-3	5-1/4 x 3-5/8 x 15-1/4"	15-1/4"	12
4015-4	6-1/2 x 1 x 15-1/4"	15-1/4"	30
4015-5	6-1/2 x 2-1/4 x 15-1/4"	15-1/4"	15
4015-6	10 x 1 x 15-1/4"	15-1/4"	20
4015-7	10 x 2-1/4 x 15-1/4"	15-1/4"	10
4015-8	10-3/4 x 1-5/8 x 15-1/4"	15-1/4"	12
4015-9	10-3/4 x 3-5/8 x 15-1/4"	15-1/4"	6
4015-10	20-1/4 x 1 x 15-1/4"	15-1/4"	10
4015-11	20-1/4 x 2-1/4 x 15-1/4"	15-1/4"	5
TOTE SIZE - 18-3/4 X 14 X 15"			
4020	12 x 1-5/8 x 15"	15"	10
4020-1	12 x 3-1/2 x 15"	15"	5
TOTE SIZE - 18-5/8 X 15 X 14-1/4"			
4530	4 x 1-1/4 x 14"	12"	40
4530-1	4 x 2-3/4 x 14"	12"	20
4530-2	5-3/8 x 1-1/4 x 14"	12"	30
4530-3	5-3/8 x 2-3/4 x 14"	12"	15
4530-5	6-1/4 x 1-1/4 x 14"	12"	20
4530-7	6-1/4 x 3-1/2 x 14"	12"	10
4530-9	8-1/8 x 1-1/4 x 14"	12"	20
4530-10	8-1/8 x 2-3/4 x 14"	12"	10
4530-12	12-3/4 x 1-1/2 x 14"	12"	10
4530-14	12-3/4 x 3-1/2 x 14"	12"	5
4530-16	16-5/8 x 1-1/4 x 14"	12"	10
4530-17	16-5/8 x 2-3/4 x 14"	12"	5
TOTE SIZE - 22-3/4 X 12 -1/2 X 14"			
4000-4	4-7/8 x 1 x 14"	12-15/16"	40
4000-4-5	4-7/8 x 2-1/4 x 14"	12-15/16"	20
4000-4-1	6-1/2 x 1 x 14"	12-15/16"	30
4000-4-6	6-1/2 x 2-1/4 x 14"	12-15/16"	15
4000-4-2	10 x 1 x 14"	12-15/16"	20

CCI P/N	SIZE L X W X H (I.D.)	PH	# OF CELLS
TOTE SIZE - 22-3/4 X 12 -1/2 X 14"			
4000-4-7	10 x 2-1/4 x 14"	12-15/16"	10
4000-4-3	20-1/4 x 1 x 14"	12-15/16"	10
4000-4-8	20-1/4 x 2-1/4 x 14"	12-15/16"	5
TOTE SIZE - 22-3/4 X 12 -1/2 X 13"			
4000	4-7/8 x 1 x 13"	12-15/16"	40
4000-5	4-7/8 x 2-1/4 x 13"	12-15/16"	20
4080-1	5-1/4 x 1-1/4 x 13"	12-3/4"	30
4080-3	5-1/4 x 2-3/4 x 13"	12-3/4"	14
4000-1	6-1/2 x 1 x 13"	12-15/16"	30
4000-6	6-1/2 x 2-1/4 x 13"	12-15/16"	15
4000-2	10 x 1 x 13"	12-15/16"	20
4000-7	10 x 2-1/4 x 13"	12-15/16"	10
4080-2	10-3/4 x 2-3/4 x 13"	12-3/4"	7
4080	10-3/4 x 1-1/4 x 13"	12-3/4"	15
4000-3	20-1/4 x 1 x 13"	12-15/16"	10
4000-8	20-1/4 x 2-1/4 x 13"	12-15/16"	5
TOTE SIZE - 18-3/8 X 12 -3/8 X 13"			
4830	7-7/8 x 1 x 12-3/4"	10-3/4"	20
4830-1	7-7/8 x 2-1/4 x 12-3/4"	10-3/4"	10
4830-2	16 x 1 x 12-3/4"	10-3/4"	10
4830-3	16 x 2-1/4 x 12-3/4"	10-3/4"	5
TOTE SIZE - 18-5/8 X 15 X 12-1/4"			
4430	4 x 1-1/4 x 12-1/4"	12"	40
4430-1	4 x 2-3/4 x 12-1/4"	12"	20
4430-2	5-3/8 x 1-1/4 x 12-1/4"	12"	30
4430-3	5-3/8 x 2-3/4 x 12-1/4"	12"	15
4430-5	6-1/4 x 1-5/8 x 12-1/4"	12"	20
4430-7	6-1/4 x 3-1/2 x 12-1/4"	12"	10
4430-9	8-1/8 x 1-1/4 x 12-1/4"	12"	20
4430-10	8-1/8 x 2-3/4 x 12-1/4"	12"	10
4430-12	12-3/4 x 1-5/8 x 12-1/4"	12"	10
4430-14	12-3/4 x 3-1/2 x 12-1/4"	12"	5
4430-16	16-5/8 x 1-1/4 x 12-1/4"	12"	10
4430-17	16-5/8 x 2-3/4 x 12-1/4"	12"	5
TOTE SIZE - 17-3/4 X 14-3/4 X 11-1/4"			
4110	6 x 1-1/4 x 11-1/4"	9"	20
4110-5	6 x 2-3/4 x 11-1/4"	9"	10
4110-1	7-1/2 x 1-1/4 x 11-1/4"	9"	20
4110-6	7-1/2 x 2-3/4 x 11-1/4"	9"	10
4110-2	12-1/4 x 1-1/4 x 11-1/4"	9"	10
4110-3	13-3/4 x 1-1/4 x 11-1/4"	9"	10
4110-4	15-1/4 x 1-1/4 x 11-1/4"	9"	10
4110-7	12-1/4 x 2-3/4 x 11-1/4"	9"	5
4110-8	13-3/4 x 2-3/4 x 11-1/4"	9"	5

CCI P/N	SIZE L X W X H (I.D.)	PH	# OF CELLS
TOTE SIZE - 17-7/8 X 14-3/4 X 11-1/4"			
4110-9	15-1/4 x 2-3/4 x 11-1/4"	9"	5
TOTE SIZE - 16-5/8 X 9-3/4 X 11-3/8"			
4005	4-3/4 x 3/4 x 11-1/4"	11-1/8"	30
4005-3	4-11/16 x 1-3/4 x 11-1/4"	11-1/8"	15
4005-1	7-3/16 x 3/4 x 11-1/4"	11-1/8"	20
4005-4	7-1/8 x 1-3/4 x 11-1/4"	11-1/8"	10
4100	8 x 3/4 x 11-1/4"	11"	15
4100-1	8 x 2 x 11-1/4"	11"	7
4005-2	14-1/2 x 3/4 x 11-1/4"	11-1/8"	10
4005-5	14-1/2 x 1-3/4 x 11-1/4"	11-1/8"	5
TOTE SIZE - 18-1/2 X 12-1/2 X 11-1/8"			
4820	7-7/8 x 1 x 10-3/4"	10-3/4"	20
4820-1	7-7/8 x 1-1/4 x 10-3/4"	10-3/4"	10
4820-2	16 x 1 x 10-3/4"	10-3/4"	10
4820-3	16 x 2-1/4 x 10-3/4"	10-3/4"	5
TOTE SIZE - 23-7/8 X 12-1/4 X 10-5/8"			
4030-5	5-1/4 x 1 x 10-3/4"	10-3/8"	40
4030-6	5-1/4 x 2-1/4 x 10-3/4"	10-3/8"	20
4030-7	7 x 1 x 10-3/4"	10-3/8"	30
4030-8	7 x 2-1/4 x 10-3/4"	10-3/8"	15
4030-2	10-3/4 x 1 x 10-3/4"	10-3/8"	20
4030-4	10-3/4 x 2-1/4 x 10-3/4"	10-3/8"	10
4030-1	21-3/4 x 1 x 10-3/4"	10-3/8"	10
4030-3	21-3/4 x 2-1/4 x 10-3/4"	10-3/8"	5
TOTE SIZE - 20-1/4 X 16 X 10-1/2"			
4050	18-1/4 x 1-3/8 x 10-1/2"	10-1/2"	10
4050-1	18-1/4 x 3 x 10-1/2"	10-1/2"	5
TOTE SIZE - 18-5/8 X 15-7/16 X 10-3/4"			
4330	4 x 1-1/4 x 10"	7-3/4"	40
4330-1	4 x 2-3/4 x 10"	7-3/4"	20
4330-2	5-1/2 x 1-1/4 x 10"	7-3/4"	30
4330-3	5-3/8 x 2-3/4 x 10"	7-3/4"	15
4330-5	6-1/4 x 1-5/8 x 10"	7-3/4"	20
4330-7	6-1/4 x 3-1/2 x 10"	7-3/4"	10
4330-9	8-3/8 x 1-1/4 x 10"	7-3/4"	20
4330-10	8-3/8 x 2-3/4 x 10"	7-3/4"	10
4330-12	12-3/4 x 1-5/8 x 10"	7-3/4"	10
4330-14	12-3/4 x 3-1/2 x 10"	7-3/4"	5
4330-16	17 x 1-1/4 x 10"	7-3/4"	10
4330-17	16-5/8 x 2-3/4 x 10"	7-3/4"	5
TOTE SIZE - 16-5/8 X 9-3/4 X 9-1/4"			
4008-1	3-7/8 x 3/4 x 9-1/4"	7-1/2"	30
4008-2	3-7/8 x 1-3/4 x 9-1/4"	6-3/4"	14
4008-3	3-1/2 x 1-3/4 x 9-1/4"	6-3/4"	20

CORSTAT IN-PLANT HANDLERS
STANDARD CELL SIZES

CCI P/N	SIZE L X W X H (I.D.)	PH	# OF CELLS
TOTE SIZE - 16-5/8 X 9-3/4 X 9-1/4"			
4008-4	4-11/16 x 3/4 x 9-1/4"	7-1/2"	30
4008-5	4-11/16 x 1-3/4 x 9-1/4"	7-1/2"	15
4008-6	7-1/8 x 3/4 x 9-1/4"	7-1/2"	20
4008-7	7-1/8 x 1-3/4 x 9-1/4"	7-1/2"	10
4008-8	8 x 3/4 x 9-1/4"	6-3/4"	15
4008-9	8 x 1-3/4 x 9-1/4"	6-3/4"	7
4008-10	14-1/2 x 3/4 x 9-1/4"	7-1/2"	10
4008-11	14-1/2 x 1-5/8 x 9-1/4"	7-1/2"	5
TOTE SIZE - 18-3/8 X 12-3/8 X 9"			
4810	7-7/8 x 1 x 8-3/4"	6-3/4"	20
4810-1	7-7/8 x 2-1/4 x 8-3/4"	6-3/4"	10
4810-2	16 x 1 x 8-3/4"	6-3/4"	10
4810-3	16 x 2-1/4 x 8-3/4"	6-3/4"	5
TOTE SIZE - 22-7/8 X 12-7/8 X 8"			
4140	4-7/8 x 1 x 8"	6"	40
4140-1	4-7/8 x 2-1/4 x 8"	6"	20
4140-2	5-1/4 x 1-5/8 x 8"	7-3/4"	24
4140-3	5-1/4 x 3-5/8 x 8"	6"	12
4140-4	6-1/2 x 1 x 8"	6"	30
4140-5	6-1/2 x 2-1/4 x 8"	6"	15
4140-6	10 x 1 x 8"	6"	20
4140-7	10 x 2-1/4 x 8"	6"	10
4140-8	10-3/4 x 1-5/8 x 8"	7-3/4"	12
4140-9	10-3/4 x 3-5/8 x 8"	7-3/4"	6
4140-10	20-1/4 x 1 x 8"	6"	10
4140-11	20-1/4 x 2-1/4 x 8"	6"	5
TOTE SIZE - 18-5/8 X 15 X 8"			
4130-17	4 x 1-1/4 x 8"	7-11/16"	40
4130-16	4 x 2-3/4 x 8"	7-11/16"	20
4130	5-1/2 x 1-1/4 x 8"	7-11/16"	30
4130-2	5-1/2 x 2-3/4 x 8"	7-11/16"	15
4130-5	6-1/4 x 1-5/8 x 8"	8"	20
4130-7	6-1/4 x 3-1/2 x 8"	8"	10
4130-9	8-3/8 x 1-1/4 x 8"	7-11/16"	20
4130-10	8-1/8 x 2-3/4 x 8"	7-11/16"	10
4130-12	12-3/4 x 1-5/8 x 8"	8"	10
4130-14	12-3/4 x 3-1/2 x 8"	8"	5
4130-1	17 x 1-1/4 x 8"	7-11/16"	10
4130-3	17 x 2-3/4 x 8"	7-11/16"	5
TOTE SIZE - 16-5/8 X 9-3/4 X 7-3/8"			
4007-6	3-1/2 x 1-3/4 x 7-1/2"	7-1/2"	20
4060-1	3-7/8 x 7/8 x 7-1/2"	6-3/4"	30
4060-3	3-7/8 x 2 x 7-1/2"	6-3/4"	14
4007	4-3/4 x 3/4 x 7-1/2"	7-1/2"	30
4007-3	4-3/4 x 1-3/4 x 7-1/2"	7-1/2"	15
4007-1	7-1/8 x 3/4 x 7-1/2"	7-1/2"	20
4007-4	7-1/4 x 1-3/4 x 7-1/2"	7-1/2"	10
4060	8 x 7/8 x 7-1/2"	6-3/4"	15
4060-2	8 x 2 x 7-1/2"	6-3/4"	7
4007-2	14-1/2 x 3/4 x 7-1/2"	7-1/2"	10
4007-5	14-5/8 x 1-3/4 x 7-1/2"	7-1/2"	5
TOTE SIZE - 18-3/8 X 12-3/8 X 7"			
4800	7-7/8 x 1 x 6-3/4"	6-3/4"	20
4800-1	7-7/8 x 2-1/4 x 6-3/4"	6-3/4"	10
4800-2	16 x 1 x 6-3/4"	6-3/4"	10
4800-3	16 x 2-1/4 x 6-3/4"	6-3/4"	5

CCI P/N	SIZE L X W X H (I.D.)	PH	# OF CELLS
TOTE SIZE - 18-1/2 X 10 X 6-3/4"			
4040-1	4-1/4 x 1-7/8 x 6-3/4"	6-3/4"	16
4040-3	4-1/4 x 4 x 6-3/4"	6-3/4"	8
4040	8-3/4 x 1-7/8 x 6-3/4"	6-3/4"	8
4040-2	8-3/4 x 4 x 6-3/4"	6-3/4"	4
TOTE SIZE - 22-3/4 X 12-3/4 X 6-1/2"			
4001	4-7/8 x 1 x 6"	6"	40
4001-1	4-7/8 x 2-1/4 x 6"	6"	20
4001-2	5-1/4 x 1-5/8 x 6"	6"	24
4001-3	5-1/4 x 3-5/8 x 6"	6"	12
4001-4	6-1/2 x 1 x 6"	6"	30
4001-5	6-1/2 x 2-1/4 x 6"	6"	15
4001-6	10 x 1 x 6"	6"	20
4001-7	10 x 2-1/4 x 6"	6"	10
4001-8	10-3/4 x 1-5/8 x 6"	6"	12
4001-9	10-3/4 x 3-5/8 x 6"	6"	6
4001-10	20-1/4 x 1 x 6"	6"	10
4001-11	20-1/4 x 2-1/4 x 6"	6"	5
TOTE SIZE - 18-5/8 X 15-3/8 X 6-1/4"			
4230	4 x 1-1/4 x 5-7/8"	5-7/8"	40
4230-1	4 x 2-3/4 x 5-7/8"	5-7/8"	20
4230-2	5-3/8 x 1-1/4 x 5-7/8"	5-7/8"	30
4230-3	5-3/8 x 2-3/4 x 5-7/8"	5-7/8"	15
4230-6	6-1/4 x 1-5/8 x 5-7/8"	5-7/8"	20
4230-7	6-1/4 x 3-1/2 x 5-7/8"	5-7/8"	10
4230-8	8-3/4 x 1-1/4 x 5-7/8"	5-7/8"	20
4230-5	6-1/4 x 1-5/8 x 5-7/8"	5-7/8"	20
4230-4	12-7/8 x 1-7/8 x 5-7/8"	5-7/8"	8
4230-20	1-7/8 x 1-1/4 x 5-7/8"	5-7/8"	80
4230-19	2-3/4 x 1-7/8 x 5-7/8"	5-7/8"	40
4230-18	3-7/8 x 1-1/4 x 5-7/8"	5-7/8"	40
4230-15	4-1/4 x 1-7/8 x 5-7/8"	5-7/8"	5
4230-14	12-3/4 x 3-1/2 x 5-7/8"	5-7/8"	16
4230-13	6-1/4 x 1-7/8 x 5-7/8"	5-7/8"	16
4230-9	8-1/4 x 1-1/4 x 5-7/8"	5-7/8"	20
4230-10	8-1/4 x 2-3/4 x 5-7/8"	5-7/8"	10
4230-11	12-3/4 x 1-5/8 x 5-7/8"	5-7/8"	10
4230-12	12-3/4 x 1-5/8 x 5-7/8"	5-7/8"	10
4230-16	16-5/8 x 1-1/4 x 5-7/8"	5-7/8"	10
4230-17	16-5/8 x 2-3/4 x 5-7/8"	5-7/8"	5
TOTE SIZE - 18-1/2 X 13-3/4 X 6-3/8"			
4009	5-3/4 x 1-5/8 x 6-1/8"	6"	20
4009-2	5-3/4 x 3-1/2 x 6-1/8"	6"	10
4070-1	5-7/8 x 1 x 6-1/8"	6"	30
4070-3	5-7/8 x 2-1/4 x 6-1/8"	6"	14
4009-1	11-3/4 x 1-5/8 x 6-1/8"	6"	10
4009-3	11-3/4 x 3-1/2 x 6-1/8"	6"	5
4070	12 x 1 x 6-1/8"	6"	15
4070-2	12 x 2-1/4 x 6-1/8"	6"	7
TOTE SIZE - 16-5/8 X 9-3/4 X 5-3/4"			
4006	2-1/4 x 3/4 x 5-5/8"	5-5/8"	60
4006-1	2-1/4 x 1-3/4 x 5-5/8"	5-5/8"	30
4006-2	4-3/4 x 3/4 x 5-5/8"	5-5/8"	30
4006-3	4-3/4 x 1-3/4 x 5-5/8"	5-5/8"	15
4006-4	7-1/4 x 3/4 x 5-5/8"	5-5/8"	20
4006-5	7-1/4 x 1-3/4 x 5-5/8"	5-5/8"	10
4006-6	14-3/4 x 3/4 x 5-5/8"	5-5/8"	10

CCI P/N	SIZE L X W X H (I.D.)	PH	# OF CELLS
TOTE SIZE - 16-5/8 X 9-3/4 X 5-5/8"			
4006-7	14-3/4 x 1-3/4 x 5-5/8"	5-3/8"	5
TOTE SIZE - 19-1/2 X 12-3/8 X 5-1/2"			
4120	2-7/8 x 15/16 x 5-1/2"	5"	60
4120-4	2-7/8 x 2-1/8 x 5-1/2"	5"	30
4120-1	5-7/8 x 15/16 x 5-1/2"	5"	30
4120-5	5-7/8 x 2-1/8 x 5-1/2"	5"	15
4120-2	9 x 15/16 x 5-1/2"	5"	20
4120-6	9 x 2-1/8 x 5-1/2"	5"	10
4120-3	18-1/8 x 15/16 x 5-1/2"	5"	10
4120-7	18-1/8 x 2-1/8 x 5-1/2"	5"	5
TOTE SIZE - 10-3/8 X 10-3/8 X 4 OR 5-3/8"			
4011	3/4 x 3/4 x 3-7/8"	3"	100
4011-1	3/4 x 1-3/4 x 3-7/8"	3"	50
4012	3/4 x 3/4 x 5-3/8"	3"	100
4012-1	3/4 x 1-3/4 x 5-3/8"	3"	50
TOTE SIZE - 16-5/8 X 9-3/4 X 3-3/4"			
4004	2-1/4 x 3/4 x 3-3/4"	3-1/2"	60
4004-1	2-1/4 x 1-3/4 x 3-3/4"	3-1/2"	30
4004-2	4-3/4 x 3/4 x 3-3/4"	3-1/2"	30
4004-3	4-3/4 x 1-3/4 x 3-3/4"	3-1/2"	15
4004-4	7-1/4 x 3/4 x 3-3/4"	3-1/2"	20
4004-5	7-1/4 x 1-3/4 x 3-3/4"	3-1/2"	10
4004-6	14-3/4 x 3/4 x 3-3/4"	3-1/2"	10
4004-7	14-3/4 x 1-3/4 x 3-3/4"	3-1/2"	5
TOTE SIZE - 16-5/8 X 9-3/4 X 2-3/4"			
4002-8	1-7/16 x 1-1/4 x 2-1/2"	2-1/2"	60
4002	2-1/4 x 3/4 x 2-1/2"	2-1/2"	60
4002-1	2-1/4 x 1-3/4 x 2-1/2"	2-1/2"	30
4002-9	2-5/8 x 1-3/8 x 2-1/2"	2-1/2"	30
4002-10	3-1/16 x 1-1/4 x 2-1/2"	2-1/2"	30
4002-11	3-1/16 x 2-1/16 x 2-1/2"	2-1/2"	15
4002-2	4-3/4 x 3/4 x 2-1/2"	2-1/2"	30
4002-3	4-3/4 x 1-3/4 x 2-1/2"	2-1/2"	15
4002-14	4-5/8 x 1-1/4 x 2-1/2"	2-1/2"	18
4002-15	4-5/8 x 2-1/16 x 2-1/2"	2-1/2"	9
4002-12	4-1/16 x 1-7/16 x 2-1/2"	2-1/2"	20
4002-13	4-1/16 x 3-1/16 x 2-1/2"	2-1/2"	10
4002-4	7-1/4 x 3/4 x 2-1/2"	2-1/2"	20
4002-5	7-1/4 x 1-3/4 x 2-1/2"	2-1/2"	10
4002-16	7-3/4 x 1-1/4 x 2-1/2"	2-1/2"	12
4002-17	7-3/4 x 2-1/16 x 2-1/2"	2-1/2"	6
4002-18	8-5/16 x 1-7/16 x 2-1/2"	2-1/2"	10
4002-19	8-5/16 x 2-1/16 x 2-1/2"	2-1/2"	5
4002-6	14-3/4 x 3/4 x 2-1/2"	2-1/2"	10
4002-7	14-3/4 x 1-3/4 x 2-1/2"	2-1/2"	5
4002-20	15-13/16 x 1-1/4 x 2-1/2"	2-1/2"	6

STOCK IN-PLANT HANDLERS AND PARTITION SETS ARE SHIPPED KNOCKED-DOWN FLAT (KDF) UNLESS SPECIFIED OTHERWISE.
For more information visit: www.corstat.com/InplantHandlers

SUPER ADJUSTABLE SERIES IN-PLANT HANDLERS

TOTES THAT BRING YOU THE MOST OPTIONS, PERIOD.

TOTE SIZE - 16-5/8 X 9-3/4 X 2-3/4" • PARTITION HEIGHT - 2-1/2"		
CCI P/N	SIZE L X W X H (I.D.)	# OF CELLS
4202-1	1-3/4 x 1 x 2"	150
4202-2	1-3/4 x 2-1/4 x 2"	70
4202-3	1-3/4 x 3-1/2 x 2"	50
4202-4	3-3/4 x 1 x 2"	75
4202-5	3-3/4 x 2-1/4 x 2"	35
4202-6	3-3/4 x 3-1/2 x 2"	25
4202-7	5-3/4 x 1 x 2"	45
4202-8	5-3/4 x 2-1/4 x 2"	21
4202-9	5-3/4 x 3-1/2 x 2"	15
4202-10	7-3/4 x 1 x 2"	30
4202-11	7-3/4 x 2-1/4 x 2"	14
4202-12	7-3/4 x 3-1/2 x 2"	10
4202-13	9-3/4 x 1 x 2"	30
4202-14	9-3/4 x 2-1/4 x 2"	14
4202-15	9-3/4 x 3-1/2 x 2"	10
4202-16	11-3/4 x 1 x 2"	15
4202-17	11-3/4 x 2-1/4 x 2"	7
4202-18	11-3/4 x 3-1/2 x 2"	5
4202-19	13-3/4 x 1 x 2"	15
4202-20	13-3/4 x 2-1/4 x 2"	7
4202-21	13-3/4 x 3-1/2 x 2"	5
4202-22	15-3/4 x 1 x 2"	15
4202-23	15-3/4 x 2-1/4 x 2"	7
4202-24	15-3/4 x 3-1/2 x 2"	5
4202-25	17-3/4 x 1 x 2"	15
4202-26	17-3/4 x 2-1/4 x 2"	7
4202-27	17-3/4 x 3-1/2 x 2"	5
4202-28	19-3/4 x 1 x 2"	15
4202-29	19-3/4 x 2-1/4 x 2"	7
4202-30	19-3/4 x 3-1/2 x 2"	5
TOTE SIZE - 21-1/2 X 18-1/2 X 8-1/4" • PARTITION HEIGHT - 7-3/4"		
CCI P/N	SIZE L X W X H (I.D.)	# OF CELLS
4208-1	1-3/4 x 1 x 8"	150
4208-2	1-3/4 x 2-1/4 x 8"	70
4208-3	1-3/4 x 3-1/2 x 8"	50
4208-4	3-3/4 x 1 x 8"	75
4208-5	3-3/4 x 2-1/4 x 8"	35
4208-6	3-3/4 x 3-1/2 x 8"	25
4208-7	5-3/4 x 1 x 8"	45
4208-8	5-3/4 x 2-1/4 x 8"	21
4208-9	5-3/4 x 3-1/2 x 8"	15
4208-10	7-3/4 x 1 x 8"	30
4208-11	7-3/4 x 2-1/4 x 8"	14
4208-12	7-3/4 x 3-1/2 x 8"	10
4208-13	9-3/4 x 1 x 8"	30
4208-14	9-3/4 x 2-1/4 x 8"	14
4208-15	9-3/4 x 3-1/2 x 8"	10
4208-16	11-3/4 x 1 x 8"	15
4208-17	11-3/4 x 2-1/4 x 8"	7
4208-18	11-3/4 x 3-1/2 x 8"	5
4208-19	13-3/4 x 1 x 8"	15
4208-20	13-3/4 x 2-1/4 x 8"	7
4208-21	13-3/4 x 3-1/2 x 8"	5
4208-22	15-3/4 x 1 x 8"	15
4208-23	15-3/4 x 2-1/4 x 8"	7
4208-24	15-3/4 x 3-1/2 x 8"	5
4208-25	17-3/4 x 1 x 8"	15
4208-26	17-3/4 x 2-1/4 x 8"	7
4208-27	17-3/4 x 3-1/2 x 8"	5
4208-28	19-3/4 x 1 x 8"	15
4208-29	19-3/4 x 2-1/4 x 8"	7
4208-30	19-3/4 x 3-1/2 x 8"	5

TOTE SIZE - 21-1/2 X 18-1/2 X 4-1/4" • PARTITION HEIGHT - 3-3/4"		
CCI P/N	SIZE L X W X H (I.D.)	# OF CELLS
4204-1	1-3/4 x 1 x 4"	150
4204-2	1-3/4 x 2-1/4 x 4"	70
4204-3	1-3/4 x 3-1/2 x 4"	50
4204-4	3-3/4 x 1 x 4"	75
4204-5	3-3/4 x 2-1/4 x 4"	35
4204-6	3-3/4 x 3-1/2 x 4"	25
4204-7	5-3/4 x 1 x 4"	45
4204-8	5-3/4 x 2-1/4 x 4"	21
4204-9	5-3/4 x 3-1/2 x 4"	15
4204-10	7-3/4 x 1 x 4"	30
4204-11	7-3/4 x 2-1/4 x 4"	14
4204-12	7-3/4 x 3-1/2 x 4"	10
4204-13	9-3/4 x 1 x 4"	30
4204-14	9-3/4 x 2-1/4 x 4"	14
4204-15	9-3/4 x 3-1/2 x 4"	10
4204-16	11-3/4 x 1 x 4"	15
4204-17	11-3/4 x 2-1/4 x 4"	7
4204-18	11-3/4 x 3-1/2 x 4"	5
4204-19	13-3/4 x 1 x 4"	15
4204-20	13-3/4 x 2-1/4 x 4"	7
4204-21	13-3/4 x 3-1/2 x 4"	5
4204-22	15-3/4 x 1 x 4"	15
4204-23	15-3/4 x 2-1/4 x 4"	7
4204-24	15-3/4 x 3-1/2 x 4"	5
4204-25	17-3/4 x 1 x 4"	15
4204-26	17-3/4 x 2-1/4 x 4"	7
4204-27	17-3/4 x 3-1/2 x 4"	5
4204-28	19-3/4 x 1 x 4"	15
4204-29	19-3/4 x 2-1/4 x 4"	7
4204-30	19-3/4 x 3-1/2 x 4"	5
TOTE SIZE - 21-1/2 X 18-1/2 X 8-1/4" • PARTITION HEIGHT - 7-3/4"		
CCI P/N	SIZE L X W X H (I.D.)	# OF CELLS
4210-1	1-3/4 x 1 x 10"	150
4210-2	1-3/4 x 2-1/4 x 10"	70
4210-3	1-3/4 x 3-1/2 x 10"	50
4210-4	3-3/4 x 1 x 10"	75
4210-5	3-3/4 x 2-1/4 x 10"	35
4210-6	3-3/4 x 3-1/2 x 10"	25
4210-7	5-3/4 x 1 x 10"	45
4210-8	5-3/4 x 2-1/4 x 10"	21
4210-9	5-3/4 x 3-1/2 x 10"	15
4210-10	7-3/4 x 1 x 10"	30
4210-11	7-3/4 x 2-1/4 x 10"	14
4210-12	7-3/4 x 3-1/2 x 10"	10
4210-13	9-3/4 x 1 x 10"	30
4210-14	9-3/4 x 2-1/4 x 10"	14
4210-15	9-3/4 x 3-1/2 x 10"	10
4210-16	11-3/4 x 1 x 10"	15
4210-17	11-3/4 x 2-1/4 x 10"	7
4210-18	11-3/4 x 3-1/2 x 10"	5
4210-19	13-3/4 x 1 x 10"	15
4210-20	13-3/4 x 2-1/4 x 10"	7
4210-21	13-3/4 x 3-1/2 x 10"	5
4210-22	15-3/4 x 1 x 10"	15
4210-23	15-3/4 x 2-1/4 x 10"	7
4210-24	15-3/4 x 3-1/2 x 10"	5
4210-25	17-3/4 x 1 x 10"	15
4210-26	17-3/4 x 2-1/4 x 10"	7
4210-27	17-3/4 x 3-1/2 x 10"	5
4210-28	19-3/4 x 1 x 10"	15
4210-29	19-3/4 x 2-1/4 x 10"	7
4210-30	19-3/4 x 3-1/2 x 10"	5

TOTE SIZE - 21-1/2 X 18-1/2 X 6-1/4" • PARTITION HEIGHT - 5-3/4"		
CCI P/N	SIZE L X W X H (I.D.)	# OF CELLS
4206-1	1-3/4 x 1 x 6"	150
4206-2	1-3/4 x 2-1/4 x 6"	70
4206-3	1-3/4 x 3-1/2 x 6"	50
4206-4	3-3/4 x 1 x 6"	75
4206-5	3-3/4 x 2-1/4 x 6"	35
4206-6	3-3/4 x 3-1/2 x 6"	25
4206-7	5-3/4 x 1 x 6"	45
4206-8	5-3/4 x 2-1/4 x 6"	21
4206-9	5-3/4 x 3-1/2 x 6"	15
4206-10	7-3/4 x 1 x 6"	30
4206-11	7-3/4 x 2-1/4 x 6"	14
4206-12	7-3/4 x 3-1/2 x 6"	10
4206-13	9-3/4 x 1 x 6"	30
4206-14	9-3/4 x 2-1/4 x 6"	14
4206-15	9-3/4 x 3-1/2 x 6"	10
4206-16	11-3/4 x 1 x 6"	15
4206-17	11-3/4 x 2-1/4 x 6"	7
4206-18	11-3/4 x 3-1/2 x 6"	5
4206-19	13-3/4 x 1 x 6"	15
4206-20	13-3/4 x 2-1/4 x 6"	7
4206-21	13-3/4 x 3-1/2 x 6"	5
4206-22	15-3/4 x 1 x 6"	15
4206-23	15-3/4 x 2-1/4 x 6"	7
4206-24	15-3/4 x 3-1/2 x 6"	5
4206-25	17-3/4 x 1 x 6"	15
4206-26	17-3/4 x 2-1/4 x 6"	7
4206-27	17-3/4 x 3-1/2 x 6"	5
4206-28	19-3/4 x 1 x 6"	15
4206-29	19-3/4 x 2-1/4 x 6"	7
4206-30	19-3/4 x 3-1/2 x 6"	5
TOTE SIZE - 21-1/2 X 18-1/2 X 12-1/4" • PARTITION HEIGHT - 12"		
CCI P/N	SIZE L X W X H (I.D.)	# OF CELLS
4212-1	1-3/4 x 1 x 12"	150
4212-2	1-3/4 x 2-1/4 x 12"	70
4212-3	1-3/4 x 3-1/2 x 12"	50
4212-4	3-3/4 x 1 x 12"	75
4212-5	3-3/4 x 2-1/4 x 12"	35
4212-6	3-3/4 x 3-1/2 x 12"	25
4212-7	5-3/4 x 1 x 12"	45
4212-8	5-3/4 x 2-1/4 x 12"	21
4212-9	5-3/4 x 3-1/2 x 12"	15
4212-10	7-3/4 x 1 x 12"	30
4212-11	7-3/4 x 2-1/4 x 12"	14
4212-12	7-3/4 x 3-1/2 x 12"	10
4212-13	9-3/4 x 1 x 12"	30
4212-14	9-3/4 x 2-1/4 x 12"	14
4212-15	9-3/4 x 3-1/2 x 12"	10
4212-16	11-3/4 x 1 x 12"	15
4212-17	11-3/4 x 2-1/4 x 12"	7
4212-18	11-3/4 x 3-1/2 x 12"	5
4212-19	13-3/4 x 1 x 12"	15
4212-20	13-3/4 x 2-1/4 x 12"	7
4212-21	13-3/4 x 3-1/2 x 12"	5
4212-22	15-3/4 x 1 x 12"	15
4212-23	15-3/4 x 2-1/4 x 12"	7
4212-24	15-3/4 x 3-1/2 x 12"	5
4212-25	17-3/4 x 1 x 12"	15
4212-26	17-3/4 x 2-1/4 x 12"	7
4212-27	17-3/4 x 3-1/2 x 12"	5
4212-28	19-3/4 x 1 x 12"	15
4212-29	19-3/4 x 2-1/4 x 12"	7
4212-30	19-3/4 x 3-1/2 x 12"	5

SUPER ADJUSTABLE SERIES IN-PLANT HANDLERS

TOTES THAT BRING YOU THE MOST OPTIONS, PERIOD.

TOTE SIZE - 16-5/8 X 9-3/4 X 2-3/4" • PARTITION HEIGHT - 2-1/2"

CCI P/N	SIZE L X W X H (I.D.)	# OF CELLS
4002-SA-1	1-1/8 x 11/16 x 2-1/2"	120
4002-SA-2	2-7/16 x 11/16 x 2-1/2"	60
4002-SA-3	3-3/4 x 11/16 x 2-1/2"	40
4002-SA-4	5-1/16 x 11/16 x 2-1/2"	30
4002-SA-5	7-11/16 x 11/16 x 2-1/2"	20
4002-SA-6	15-9/16 x 11/16 x 2-1/2"	10
4002-SA-7	1-9/16 x 1-1/8 x 2-1/2"	60
4002-SA-8	2-7/16 x 1-9/16 x 2-1/2"	30
4002-SA-9	3-3/4 x 1-9/16 x 2-1/2"	20
4002-SA-10	5-1/16 x 1-9/16 x 2-1/2"	15
4002-SA-11	7-11/16 x 1-9/16 x 2-1/2"	10
4002-SA-12	15-9/16 x 1-9/16 x 2-1/2"	5
4002-SA-13	2-7/16 x 1-1/8 x 2-1/2"	36
4002-SA-14	3-5/16 x 1-1/8 x 2-1/2"	24
4002-SA-15	4-3/16 x 1-1/8 x 2-1/2"	24
4002-SA-16	8-9/16 x 1-1/8 x 2-1/2"	12
4002-SA-17	2-7/16 x 1-9/16 x 2-1/2"	18
4002-SA-18	3-5/16 x 2-7/16 x 2-1/2"	12
4002-SA-19	4-3/16 x 2-7/16 x 2-1/2"	12
4002-SA-20	8-9/16 x 2-7/16 x 2-1/2"	6

TOTE SIZE - 16-5/8 X 9-3/4 X 3-3/4" • PARTITION HEIGHT - 3-1/2"

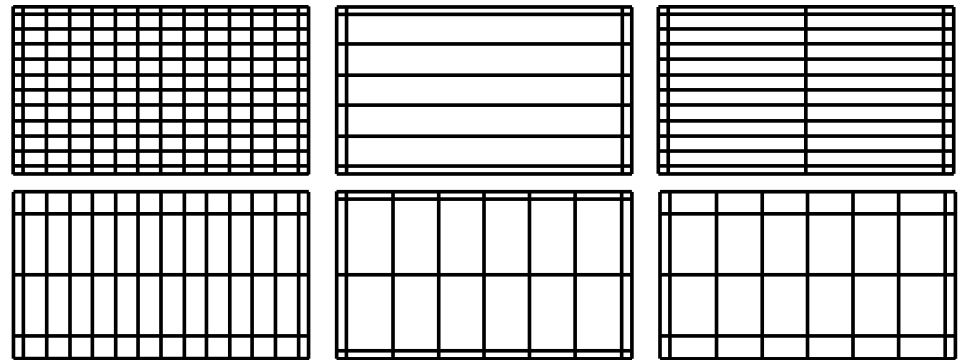
CCI P/N	SIZE L X W X H (I.D.)	# OF CELLS
4004-SA-2	2-7/16 x 11/16 x 3-1/2"	120
4004-SA-3	3-3/4 x 11/16 x 3-1/2"	60
4004-SA-4	5-1/16 x 11/16 x 3-1/2"	40
4004-SA-5	7-11/16 x 11/16 x 3-1/2"	30
4004-SA-6	15-9/16 x 11/16 x 3-1/2"	20
4004-SA-7	1-9/16 x 1-1/8 x 3-1/2"	10
4004-SA-8	2-7/16 x 1-9/16 x 3-1/2"	60
4004-SA-9	3-3/4 x 1-9/16 x 3-1/2"	30
4004-SA-10	5-1/16 x 1-9/16 x 3-1/2"	20
4004-SA-11	7-11/16 x 1-9/16 x 3-1/2"	15
4004-SA-12	15-9/16 x 1-9/16 x 3-1/2"	10
4004-SA-13	2-7/16 x 1-1/8 x 3-1/2"	5
4004-SA-14	3-5/16 x 1-1/8 x 3-1/2"	36
4004-SA-15	4-3/16 x 1-1/8 x 3-1/2"	24
4004-SA-16	8-9/16 x 1-1/8 x 3-1/2"	24
4004-SA-17	2-7/16 x 1-9/16 x 3-1/2"	12
4004-SA-18	3-5/16 x 2-7/16 x 3-1/2"	18
4004-SA-19	4-3/16 x 2-7/16 x 3-1/2"	12
4004-SA-20	8-9/16 x 2-7/16 x 3-1/2"	12
4004-SA-20	8-9/16 x 2-7/16 x 2-1/2"	6

TOTE SIZE - 16-5/8 X 9-3/4 X 5-5/8" • PARTITION HEIGHT - 5-3/8"

CCI P/N	SIZE L X W X H (I.D.)	# OF CELLS
4006-SA-1	1-1/8 x 11/16 x 5-3/8"	120
4006-SA-2	2-7/16 x 11/16 x 5-3/8"	60
4006-SA-3	3-3/4 x 11/16 x 5-3/8"	40
4006-SA-4	5-1/16 x 11/16 x 5-3/8"	30
4006-SA-5	7-11/16 x 11/16 x 5-3/8"	20
4006-SA-6	15-9/16 x 11/16 x 5-3/8"	10
4006-SA-7	1-9/16 x 1-1/8 x 5-3/8"	60
4006-SA-8	2-7/16 x 1-9/16 x 5-3/8"	30
4006-SA-9	3-3/4 x 1-9/16 x 5-3/8"	20
4006-SA-10	5-1/16 x 1-9/16 x 5-3/8"	15
4006-SA-11	7-11/16 x 1-9/16 x 5-3/8"	10
4006-SA-12	15-9/16 x 1-9/16 x 5-3/8"	5
4006-SA-13	2-7/16 x 1-1/8 x 5-3/8"	36
4006-SA-14	3-5/16 x 1-1/8 x 5-3/8"	24
4006-SA-15	4-3/16 x 1-1/8 x 5-3/8"	24
4006-SA-16	8-9/16 x 1-1/8 x 5-3/8"	12
4006-SA-17	2-7/16 x 1-9/16 x 5-3/8"	18
4006-SA-18	3-5/16 x 2-7/16 x 5-3/8"	12
4006-SA-19	4-3/16 x 2-7/16 x 5-3/8"	12
4006-SA-20	8-9/16 x 2-7/16 x 5-3/8"	6

TOTE SIZE - 16-5/8 X 9-3/4 X 7-1/2" • PARTITION HEIGHT - 7-1/4"

CCI P/N	SIZE L X W X H (I.D.)	# OF CELLS
4007-SA-1	1-1/8 x 11/16 x 7-1/4"	120
4007-SA-2	2-7/16 x 11/16 x 7-1/4"	60
4007-SA-3	3-3/4 x 11/16 x 7-1/4"	40
4007-SA-4	5-1/16 x 11/16 x 7-1/4"	30
4007-SA-5	7-11/16 x 11/16 x 7-1/4"	20
4007-SA-6	15-9/16 x 11/16 x 7-1/4"	10
4007-SA-7	1-9/16 x 1-1/8 x 7-1/4"	60
4007-SA-8	2-7/16 x 1-9/16 x 7-1/4"	30
4007-SA-9	3-3/4 x 1-9/16 x 7-1/4"	20
4007-SA-10	5-1/16 x 1-9/16 x 7-1/4"	15
4007-SA-11	7-11/16 x 1-9/16 x 7-1/4"	10
4007-SA-12	15-9/16 x 1-9/16 x 7-1/4"	5
4007-SA-13	2-7/16 x 1-1/8 x 7-1/4"	36
4007-SA-14	3-5/16 x 1-1/8 x 7-1/4"	24
4007-SA-15	4-3/16 x 1-1/8 x 7-1/4"	24
4007-SA-16	8-9/16 x 1-1/8 x 7-1/4"	12
4007-SA-17	2-7/16 x 1-9/16 x 7-1/4"	18
4007-SA-18	3-5/16 x 2-7/16 x 7-1/4"	12
4007-SA-19	4-3/16 x 2-7/16 x 7-1/4"	12
4007-SA-20	8-9/16 x 2-7/16 x 7-1/4"	6



Thousands of different cell configurations...All created to eliminate ESD.



STOCK IN-PLANT HANDLERS AND PARTITION SETS ARE SHIPPED KNOCKED-DOWN FLAT (KDF) UNLESS SPECIFIED OTHERWISE.

TOTE ACCESSORIES

Static safe standard foam pads for totes

- Multiple ESD foam options for IPHs
- 1/4" thick for top & bottom protection
- Sizes are CCI standard parts
- No tooling charges required



CONDUCTIVE CROSSLINK POLYETHYLENE - .25" THICK PAD SIZES		
CCI P/N	SIZE	FITS TOTE SIZE #
XLP25-1	23-1/2 x 12"	4030
XLP25-2	22-1/2 x 12-1/4"	4001, 4015, 4040
XLP25-3	21-1/4 x 18-1/4"	4202, 4204, 4206, 4208, 4210, 4212
XLP25-4	20 x 15-3/4"	4050
XLP25-5	19-1/4 x 12-1/4"	4120
XLP25-6	18-1/2 x 14-3/4"	4110, 4130, 4230, 4330, 4430, 4530
XLP25-7	18-1/4 x 13-1/2"	4009, 4020
XLP25-8	18-1/4 x 12-1/4"	4018, 4800, 4810, 4820, 4830
XLP25-9	18-1/4 x 9-3/4"	4040
XLP25-10	17-3/4 x 9-3/4"	4003
XLP25-11	16-1/2 x 9-1/2"	4002, 4004, 4005, 4006, 4007, 4008
XLP25-12	10-1/4 x 10-1/4"	4011, 4012

SOFTSTAT CONDUCTIVE URETHANE - .25" THICK PAD SIZES		
CCI P/N	SIZE	FITS TOTE SIZE #
SSP25-1	23-1/2 x 12"	4030
SSP25-2	22-1/2 x 12-1/4"	4001, 4015, 4040
SSP25-3	21-1/4 x 18-1/4"	4202, 4204, 4206, 4208, 4210, 4212
SSP25-4	20 x 15-3/4"	4050
SSP25-5	19-1/4 x 12-1/4"	4120
SSP25-6	18-1/2 x 14-3/4"	4110, 4130, 4230, 4330, 4430, 4530
SSP25-7	18-1/4 x 13-1/2"	4009, 4020
SSP25-8	18-1/4 x 12-1/4"	4018, 4800, 4810, 4820, 4830
SSP25-9	18-1/4 x 9-3/4"	4040
SSP25-10	17-3/4 x 9-3/4"	4003
SSP25-11	16-1/2 x 9-1/2"	4002, 4004, 4005, 4006, 4007, 4008
SSP25-12	10-1/4 x 10-1/4"	4011, 4012

DOCUMENT HOLDERS

CCI's document holder stock sizes

- Static dissipative surface
- Non-charge generating
- PSA backing
- Apply to any totes or bins

CCI P/N	DESCRIPTION
4101	Thermoformed Conductive Handle
DH4021	4 x 2" Document Holder
DH4022	7-1/2 x 4" Document Holder
DH4023	4-3/4 x 3-3/4" Document Holder
DH4025	8-1/2 x 11" Document Holder



CFP Tray and Cover with Document Holder

PLACARDS

CCI's ESD safe placard stock sizes

- Stocked sizes sold in packages of 100
- Ask CCI about getting any custom size you need
- Use low-tack adhesive for removeable labels
- Static dissipative surface

CCI STOCK PART NUMBER	SIZE (USABLE SPACE)
P24	2" x 4"
P35	3" x 5"
P75	7" x 5"



CCI'S PLACARDS CAN BE USED MULTIPLE WAYS:

1. Placard used as label locator.



2. Placard over a permanent label.



NEST TRAYS

Ideal for moving sensitive assemblies through storage and material handling processes

- Reduces storage space when empty
- Storage and material handling solution
- Highly reusable and recyclable

CORSTAT NEST TRAYS

CCI P/N	SIZE L X W X H (O.D.) TOP	(I.D.) BOTTOM
7000*	12 x 9 x 4"	8-11/16 x 5-3/4"
7010	18 x 12 x 6"	15 x 8-1/2"
7020	27-1/4 x 12 x 6"	24-1/8 x 8-1/2"
7030	27-1/4 x 18 x 6"	24-1/8 x 14-5/8"

Add "CFP" in front of the part number for the Conductive Fluted Plastic version
 *Ships Knocked Down Flat
 For more information visit: www.corstat.com/nesttrays



CORSTACKER AND DURASTAT TRAYS

Strong and durable option for handling circuit boards

- Constructed with durable Corstat material
- Double walled and molded corners assure secure stacking
- Highly reusable and recyclable
- Includes 1/8" crosslink static dissipative foam pad laminated to a Corstat stiffener pad

CORSTACKER TRAYS

CCI P/N	SIZE (I.D.)	DESCRIPTION
6201A	18 x 11-3/8 x 1-3/4"	Corstat trays with corner stackers and 1/8" thick crosslink foam attached to Corstat stiffener pad for extra durability.
6202A	24 x 18 x 2-1/8"	

DURASTAT TRAYS

CCI P/N	SIZE (I.D.)	DESCRIPTION
DT6200A	10-1/2 x 8-5/16 x 1-3/4"	DuraStat 4mm CFP tray with corner stackers and 1/8" thick crosslink foam attached to Corstat stiffener pad for extra durability.
DT6201A	18 x 11-3/8 x 1-3/4"	
DT6202A	24 x 18 x 2-1/8"	

For more information visit: www.corstat.com/BoardHandling



PROCESS TRAYS

Ideal for assembly, transport, and storage of sensitive boards and devices

- Corstat doublewall tray
- Conductive crosslink foam attached
- Conductive thermoformed version
- Conductive crosslink foam loose

CCI P/N	DESCRIPTION
13100	18 x 12" Corstat Tray with 1/4" Conductive Crosslink Foam attached
13101	18 x 12" CP Conductive Vacuum Formed Tray with Conductive Crosslink
13102	18 x 12" x 1/4" Conductive Crosslink Foam
13103	18 x 24" Corstat Tray with 1/4" Conductive Crosslink Foam attached

For more information visit: www.corstat.com/processtrays



CUSTOM SOLUTIONS FOR ESD FREE SHIPPING AND HANDLING

Although we carry a large inventory of stock ESD solutions, over 80% of the products we ship every year are custom designed and manufactured to solve a specific ESD problem. Just let us know what you need to accomplish and our packaging engineers will get to work, using proven materials and techniques:

CORSTAT

The industry standard in conductive corrugated since 1978. We invented it and continue to lead the industry with custom designed applications.

CONDUCTIVE FLUTED PLASTIC

The sturdy ESD resistant material, also known as CFP, is our DuraStat totes and many other handling containers.

THERMOFORMING

We choose the right material for your application and protect its ESD properties through our expertise.

INJECTION MOLDING

Hinged cases, wafer and component trays in all shapes and sizes expertly crafted in ESD safe plastics.

RAW MATERIALS

We stock a wide variety of inventory which allows us to keep your minimum orders low.

IN-HOUSE FABRICATION

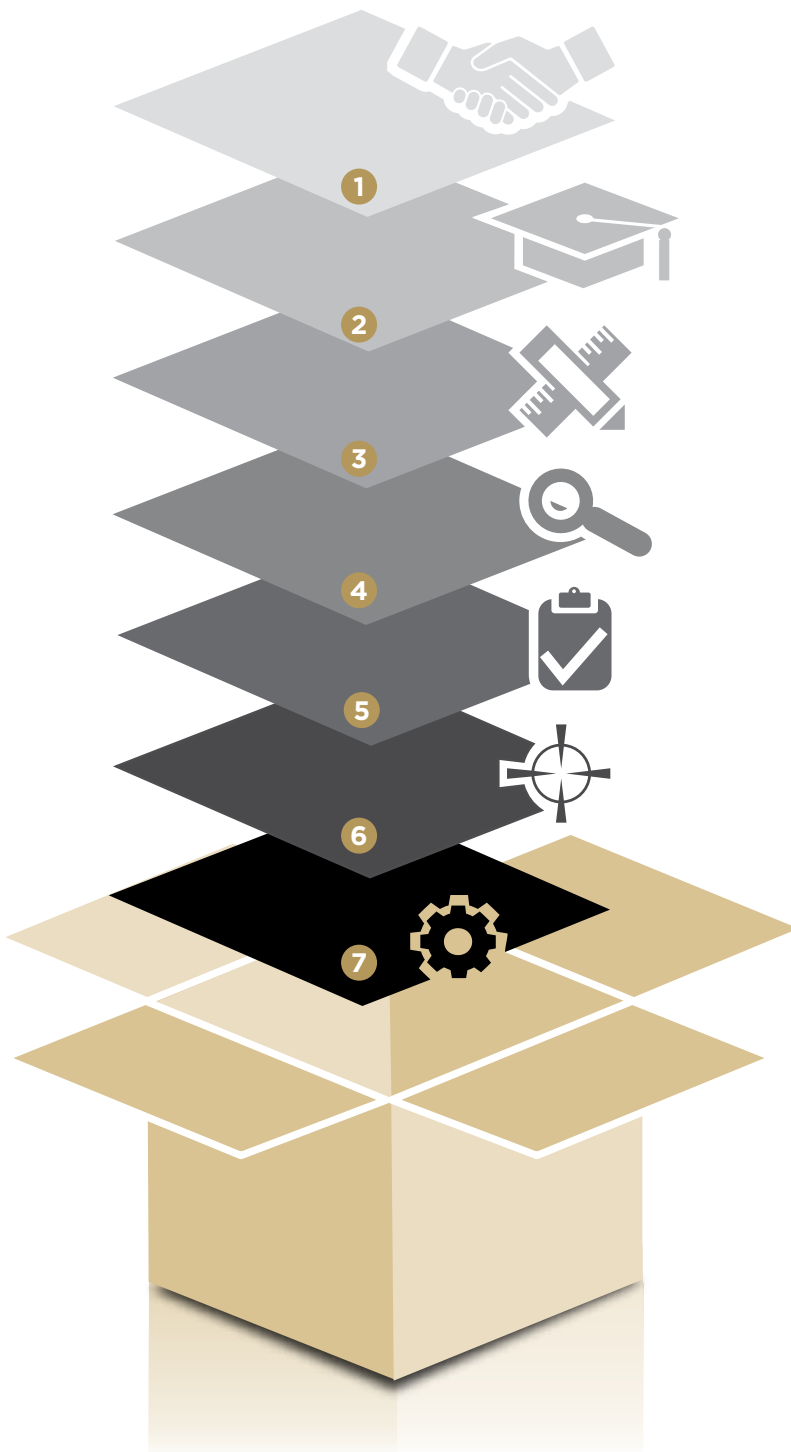
From foam to boxes, molding and forming, we do it all in-house to offer you complete solutions fast.



If you're working with ESD sensitive components, you need to be working with the ESD experts at CCI. Give us a call...

WE'RE LISTENING

THE LAYERS OF CCI



1 SALES AND SERVICE

It starts with listening to you...

You understand your product and your flow. When you explain what you want to have happen, we put our design, manufacturing and ESD expertise to work. CCI's goal is to provide you with excellent service and outstanding results.

2 EXPERIENCE AND KNOWLEDGE

As the only charter member in the ESD Association who deals solely in static protective packaging, CCI has been involved in the protection of static sensitive electronic components for nearly 40 years. Our sales engineers have an average of more than 10 years of experience in along with their continuous training, making CCI the most knowledgeable company in the industry.

3 CUSTOM DESIGNS

If a stock product cannot meet your needs, CCI can custom design products to your exact requirements. In some cases our design engineers have reduced material costs as much as 50% while maintaining, and in many cases, increasing the protective characteristics of the container. At CCI you will find versatility that is unmatched in our industry.

4 STOCK SOLUTIONS

CCI has the largest in-stock selection of packaging products in the static control market. Whether your requirements are, storage, in-plant handling, or shipping, CCI's worldwide distribution network can help fill your needs.

5 RAW MATERIAL INVENTORY

CCI has the most diverse line of materials to fit your requirements. We have the cost effective CORSTAT, Conductive Fluted Plastic (CFP), and static dissipative and conductive vacuum formable plastics not available from other suppliers. CCI also stocks various foams, both firm and soft, conductive and static dissipative to provide another protective element option.

6 DESIGN EXPERTISE

The CCI design team has been in the ESD packaging industry for years and are well educated with designing custom packaging solutions for specific shipping and handling scenarios.

7 MANUFACTURING

Manufacturing in-house provides for a very quick turn-around for your packaging. It also creates accuracy and quality as all of the manufactured pieces must be quality checked by not only our designated quality team, but our design team as well. CCI's manufacturing capabilities include: coating; die cutting and printing; thermoforming; foam fabrication; tooling; hot stamping; 3D prototyping; and automated design tables.

CORSTAT

- Industry standard since invention in 1978
- Permanently conductive material
- Cost-effective
- Process still remains the same after 30 years



Corstat board handling solution



Corstat tray for workstations and storage



Corstat tote and U-folder inserts



Corstat in-plant handler



Corstat board shipping design



Stock Corstat mailer with custom thermoformed insert

ESD THERMOFORMING

- Material available as conductive, dissipative, and cleanroom compatible
 - Ability to customize to your exact specifications
- Whole process is done under one roof at CCI • Available in KleanStat material

Permanently conductive tray and cover set



KleanStat thermoformed material
- permanently dissipative - IPA cleanable



KleanStat material used for thermoformed tray



Stock injection molded case with a dissipative thermoformed insert



Permanently conductive thermoformed tray



Custom dissipative clamshell



Conductive tray and cover set



CFP mailer with custom dissipative insert

CONDUCTIVE FLUTED PLASTIC

- Permanently conductive ESD properties
- Durable, long-lasting material
 - Available in 2, 3, and 4mm thicknesses
- A cleaner alternative to paper packaging products

CFP storage shelf with label tabs



Tote with CFP inserts



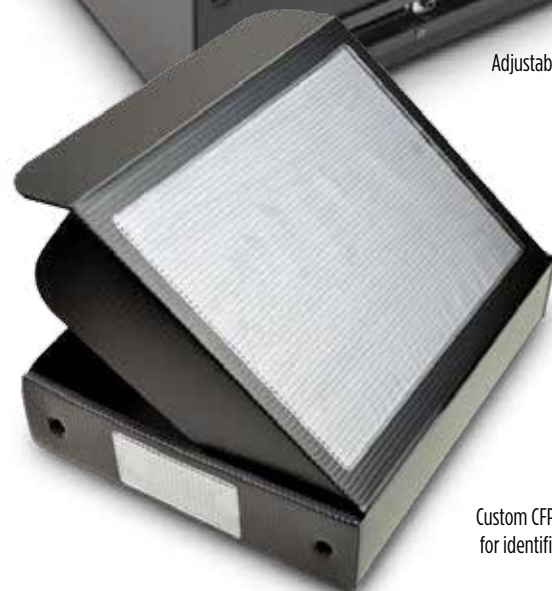
Adjustable CFP tote with custom ribbing



Custom CFP design with thermoformed handles and snap on cover



Custom CFP mailer with document holders for identification



ESD FOAM

- Available in conductive and dissipative
- Permanently conductive black foam variations
- Limited shelf life pink foam variations
- Multiple sheet sizes and thicknesses stocked-Talk with your CCI Rep to find your perfect foam



INJECTION MOLDING

- Conductive and conductive cleanroom grade available
- Multiple stock sizes
- Tongue in groove closure, durable
- Available in KleanStat material
- New, state of the art injection molding equipment

Conductive injection molded case



Durable and efficient front clasp



KleanStat injection molded cases

CORSTAT XD

- Durable cured UV outer layer - 10E5
- Used for many cleanroom applications
- Buried shielding layer - 10E3
- Stocked and available by request

Corstat XD tote and cover



Corstat XD mailer with printing



Custom KleanStat Flex insert serves as an alternative to convoluted foam

MATERIAL

APPLICATIONS

PROPERTIES

CONDUCTIVE CORRUGATED

Corstat	General packaging - permanent, cost-effective	10 ⁴ -10 ⁶
Corstat XD	Low FOD situations, cost-effective, durable	10 ⁵ -10 ⁸
Corstat DC	Low cost, durable, permanent	10 ⁶ -10 ⁹
Corstat Solid Chipboard	Low cost situations, light-use	10 ³ -10 ⁵

CONDUCTIVE FLUTED PLASTIC

CFP-2mm, 3mm, 4mm thicknesses	CFP-2mm, 3mm, 4mm thicknesses	10 ³ -10 ⁵
-------------------------------	-------------------------------	----------------------------------

FOAMS

Permanent ESD Properties:

Conductive Crosslink	Pin Insertion Grade	10 ³ -10 ⁶
Dissipative Crosslink	Shelf Liner / Tote Pads	10 ⁵ -10 ⁹
Conductive EVA Crosslink	Low FOD / Low Abrasion	10 ³ -10 ⁶

Anti-Static Pink Foam

(Limited shelf life)

ASPE	Medium-to-heavy weight cushioning	10 ¹⁰ -10 ¹²
ASPU	Light-to-medium weight cushioning	10 ¹⁰ -10 ¹²

TACKI PAK

Component handling, small / fragile devices	10 ⁴ -10 ¹⁰
---------------------------------------------	-----------------------------------

THERMOFORMED PLASTICS

Level I: Dust protection <i>(not stocked by CCI)</i>		
Level II: Certified static dissipative <i>(Limited shelf life)</i>	One-way shipping, short-term use	10 ⁸ -10 ¹⁰
Level III: Conductive styrene	Long-term use, water-washable	10 ³ -10 ⁵ (Preformed)
Level IV: Permanent dissipative PETG	Long-term use, washable, increased draw depth	10 ⁶ -10 ¹⁰
Level V: Inherently dissipative materials	Unlimited draw depth & shelf life, IPA cleanable	10 ⁸ -10 ¹⁰

INJECTION MOLDING

Conductive Polypropylene	Long-term use applications	10 ³ -10 ⁶
Conductive Polycarbonate	Long-term use applications	10 ⁴ -10 ⁹
Static Dissipative IDP	Cleanroom applications	10 ⁶ -10 ¹¹

ESD FILMS

Dissipative Blue/Black Vinyl	Durable cart covers, microscope covers	10 ³ -10 ⁴ / 10 ⁷ -10 ⁸
Airlite III	Light weight covers	10 ⁵
KleanStat Flex	Tote pads, anti-skid, cushioning, thermoforming	10 ⁷ x 10 ¹⁰

FIND ESD SOLUTIONS ONLINE

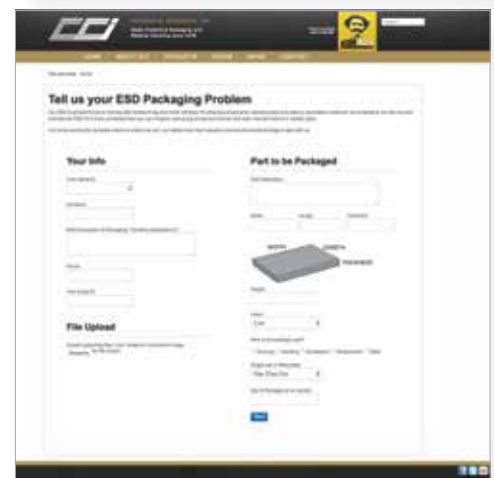
www.corstat.com

The stock catalog you're holding is just a fraction of the solutions that we offer at CCI.

For more detailed information and a current and complete list of products, visit our recently updated website - www.corstat.com:

- Tools to help you find the products and configurations you need for your specific application
- Get quotes easily with online forms
- New products gallery where you'll see our latest additions
- Tips, suggestions and spec sheets for products
- We keep you up-to-date on industry news and best practices

We designed our website to make it easier to find stock and custom ESD safe shipping and handling materials. We think we've done that. But we won't know for sure until you say so. So check us out and let us know how we did.



conductive containers, inc.

4500 Quebec Avenue North
New Hope, MN 55428

Phone: 763.537.2090 • Fax: 763.537.1738