

CCI Introduces New Bent Over Edge Reel Bins



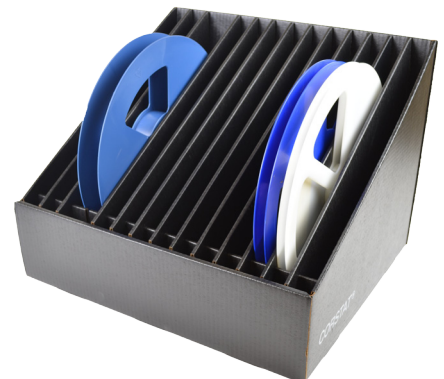
New and Improved Design for Handling and Storing Reels

CCI's new Bent Over Edge Reels bins are built using Corstat or CFP bent-over wall construction. This construction increases the strength and durability of the bin and partitions. Combining ESD Safe storage of reels with adjustable partitions that can accommodate differing sizes of reels. The new design allows the Corstat versions to ship flat.

CCI Stock Part Number	Bin Sizes	Ships Knocked-Down	Ships Assembled
Reel-7B0	17-3/4 X 9-7/8 X 7-3/8"	X	
CFP Reel-7B0	17-3/4 X 9-7/8 X 7-3/8"		X
Reel-13B0	17-3/4 X 15-7/8 X 13-3/8"	X	
CFP Reel-13B0	17-3/4 X 15-7/8 X 13-3/8"		X
Reel-7B0-23	23 X 9-7/8 X 7-3/8"	X	
CFP Reel-7B0-23	23 X 9-7/8 X 7-3/8"		X
Reel-13B0-23	23 X 15-7/8 X 13-3/8"	X	
CFP Reel-13B0-23	23 X 15-7/8 X 13-3/8"		X



- Double wall construction
- Increased strength and durability
- Corstat version ships flat
- Adjustable partitions
- ESD protection



conductive containers, inc.